

LOGINBD

LOGINBD

<u>Content Manual</u>	<u>Page no</u>
Loginbd feature/Menu list-----	3,4,5
Operational Manual-----	6
Common for all -----	7
How to create free user account -----	8,9
How to use free user account-----	10
How to make a Membership account-----	11,12,13
How to use membership account-----	14
How to create/make your own website-----	15,16,17,18,19
How to show your own website-----	20
How to create ADD URL-----	21,22
How to show your ADD URL-----	23
How to create school site-----	24,25,26,27,28,29,30
How to show your school site-----	31
How to make agent account-----	32,33,34,35,36
How to use your agent account-----	37
How to operate on agent panel-----	38
Agent panel manual details-----	38
How to publish agent business in Loginbd-----	39,40
How to show your business in loginbd-----	41
How to deposit amount-----	42,43
How to check & withdraw balance-----	44,45
How to change your password -----	46

LOGINBD

FEATURE /MANU LIST

There are all type of feature in related with LOGINBD.COM is as given bellow:

Part : 01 (Top of Home Page):

- Home
- Directory
- Add URL
- Create Own site
- About us
- Contact us
- Sign up
- Sign in

Part : 02 (a complete directory for Bangladesh):

- Search Engine
- All
- Government
- Service
- Trade
- Manufacture
- Professional)

Part : 03 (Our user category & packages):

- Free User
- Package
- Membership user

Part : 04 (More than a directory) :

- Join Web Business partner
- Business partner
- BD news paper
- About Bangladesh
- Bangladesh Diary
- Tourism Guide
- Car Buy Sale
- Electronic goods
- Download Calendar
- Real Estate
- House & Office Rent
- Tutor Information

Part : 04 (All Of our Business):

- sromobazar.com
- askbazar.com
- dressbazar.com
- itbidding.com
- itreel.com
- akashmail.com

Part : 05 (Useful links):

- Electronic media
- Radio Bangladesh
- Sports Site
- UN Agencies in Bangladesh
- Reference

Part : 06 (Download links):

- User Manual
- Leaflets
- Membership form
- Requisition form
- Agent application form
- School proposal
- Banglapedia
- Year of book

Part : 07 (Bellow of home page):

- Donate
- Privacy & policy
- Terms & Condition
- Return & cancelation policy
- FAQ'S
- Help

For details please visit our site : www.loginbd.com

Finish

OPERATIONAL MANUAL

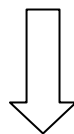
1. Free User
 2. Membership
 3. Create Own Site
 4. Add URL
 5. School Web Page
 6. Web Business Partner
- Category For Web Business Partner:
- a. Web Business Partner
 - b. Advertisement Web Business
 - c. Tutor web Business Partner
 - d. House , Market , Office Rent
 - e. Real State Portal Partner
 - f. Electronic Bazaar Business Partner
 - g. Car Sale Partner

COMMON FOR ALL

Switch on your computer



Check your internet connection

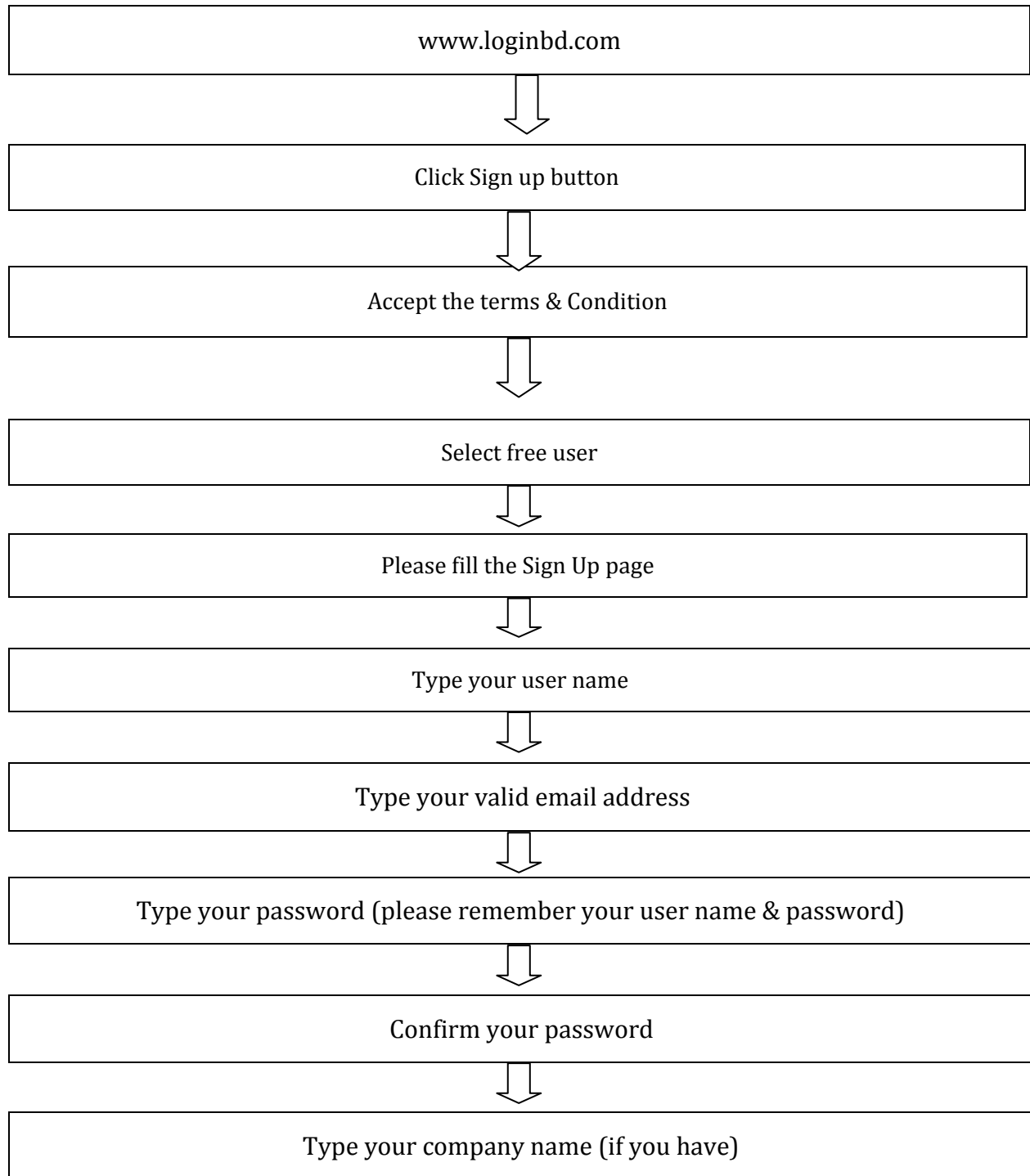


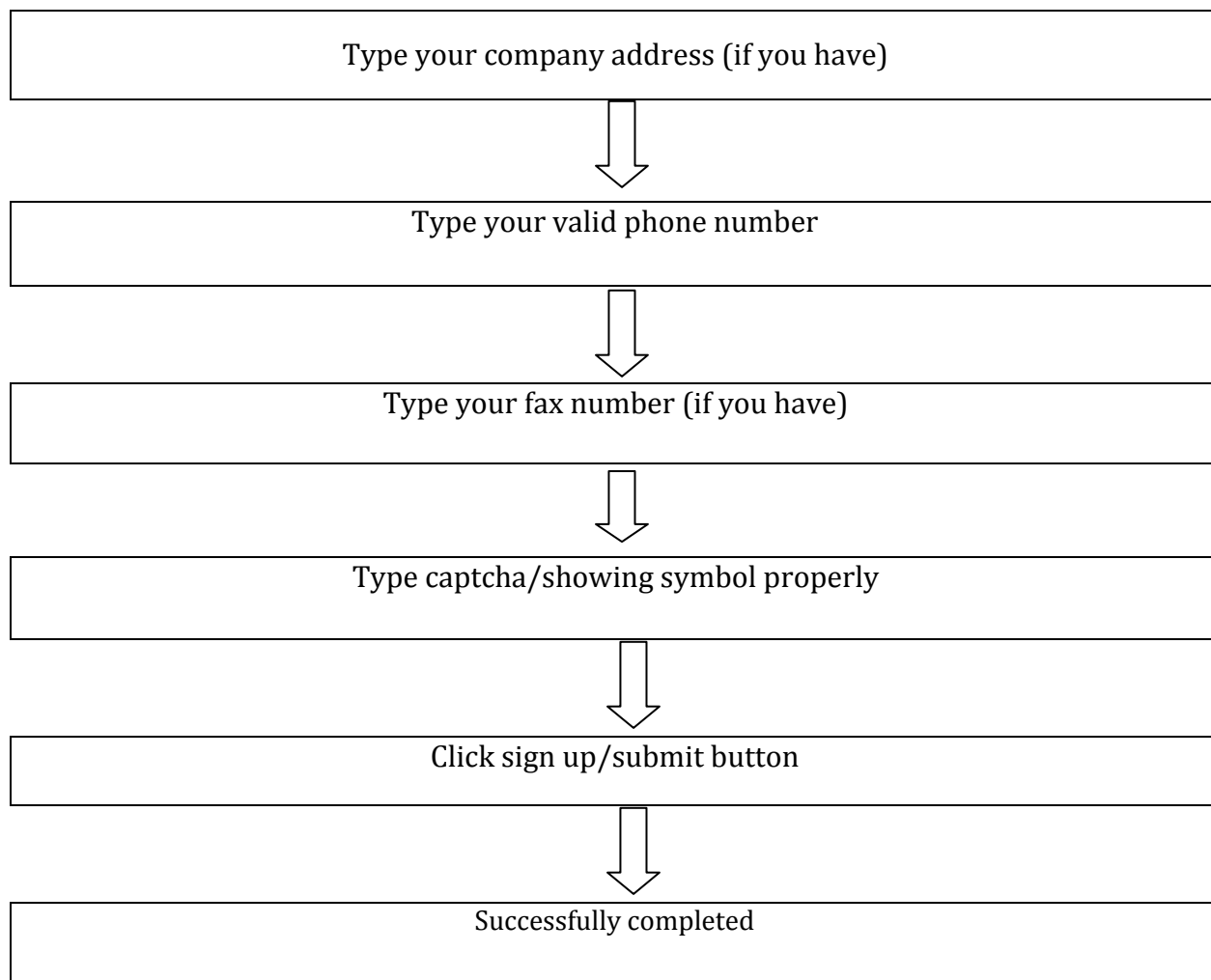
Open Internet Browser



Post the domain name (www.loginbd.com)

HOW TO CREATE FREE USER ACCOUNT





HOW TO USE FREE USER ACCOUNT

www.loginbd.com



Click Sign in button



Put your email address & password



Click Login button



Successfully Complete Sign in Process



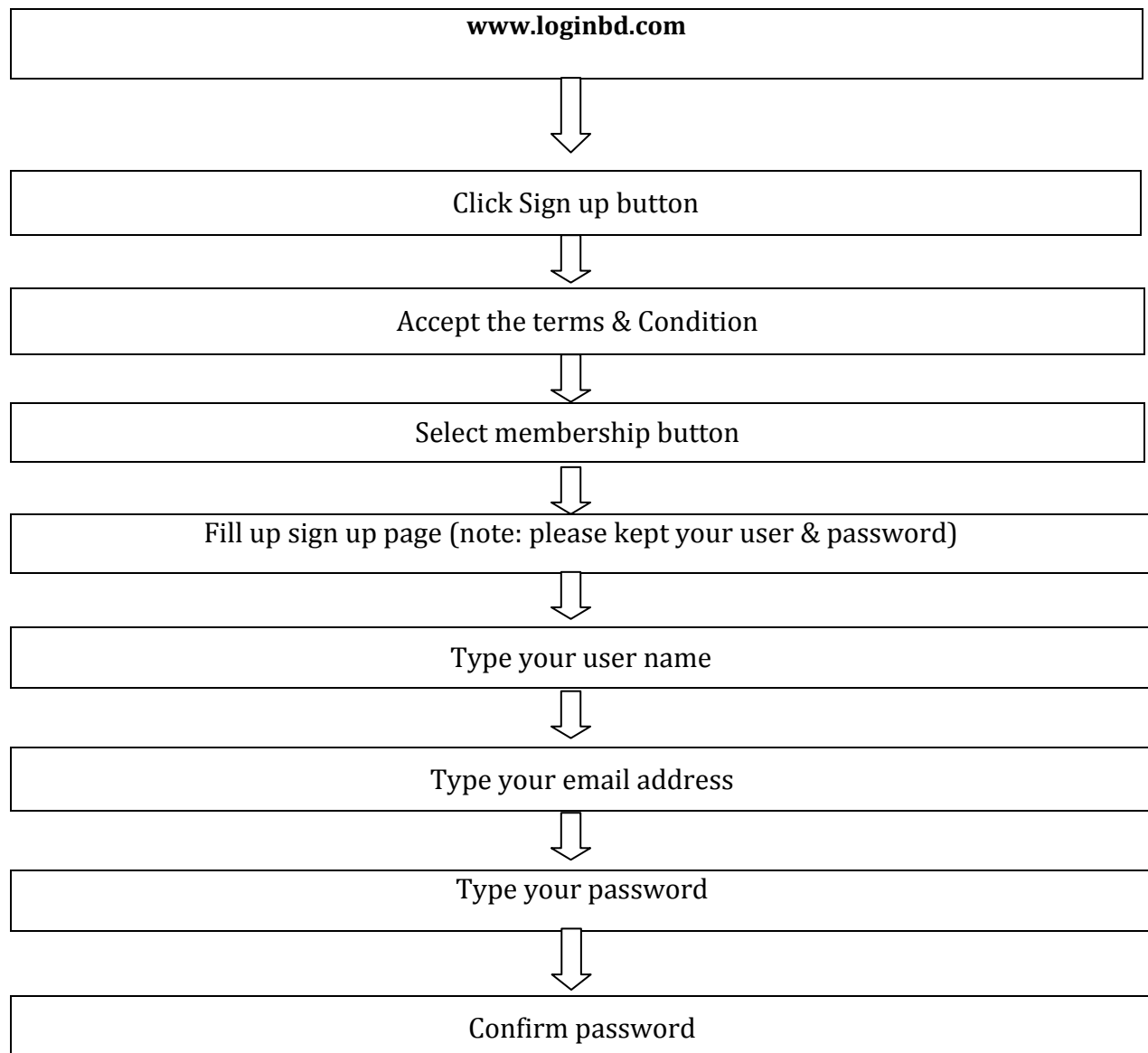
then shall access your free user account

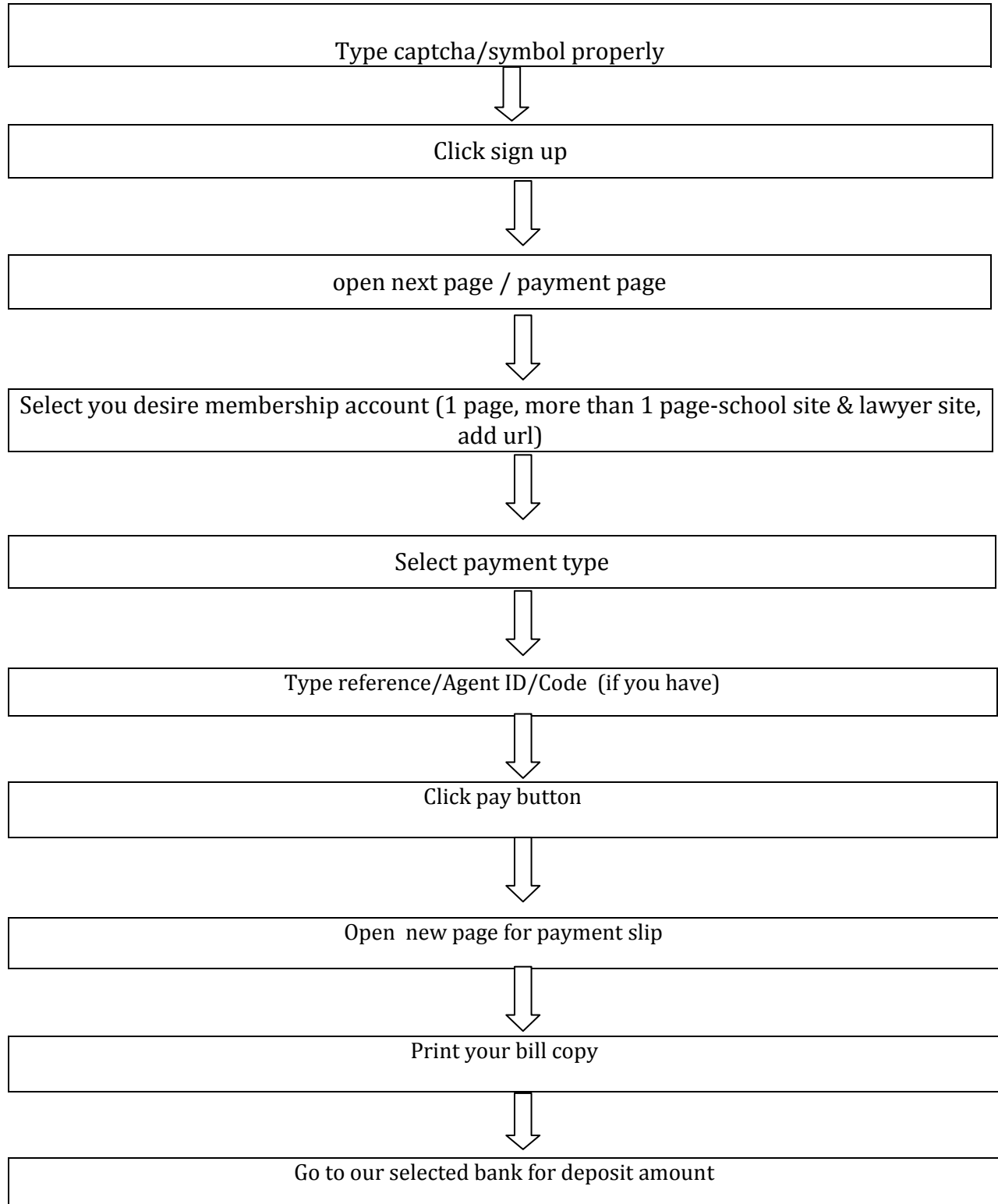
HOW TO MAKE A MEMBERSHIP ACCOUNT:

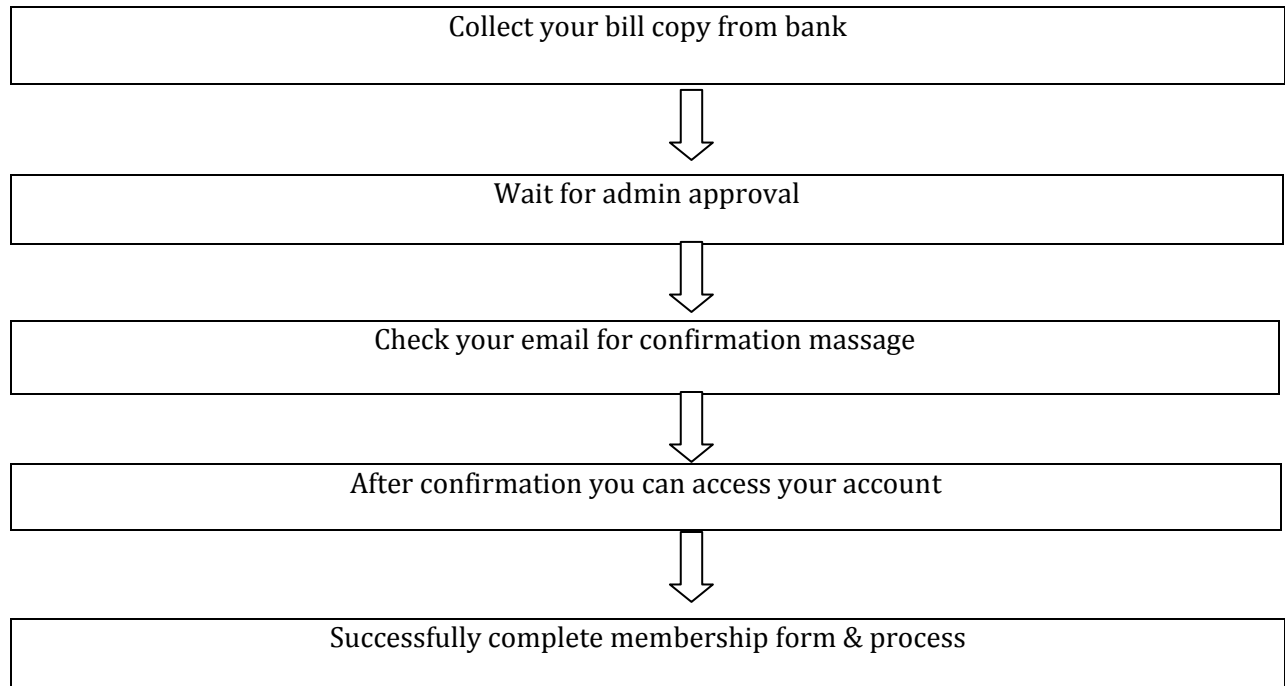
Create Own site 01 page = 1500

Create Own site more than one page = 2000 (school & lower site)

Add URL = 1000







HOW TO USE MEMBERSHIP ACCOUNT

www.loginbd.com



Click sign in button



Put your email address & password



Click log in



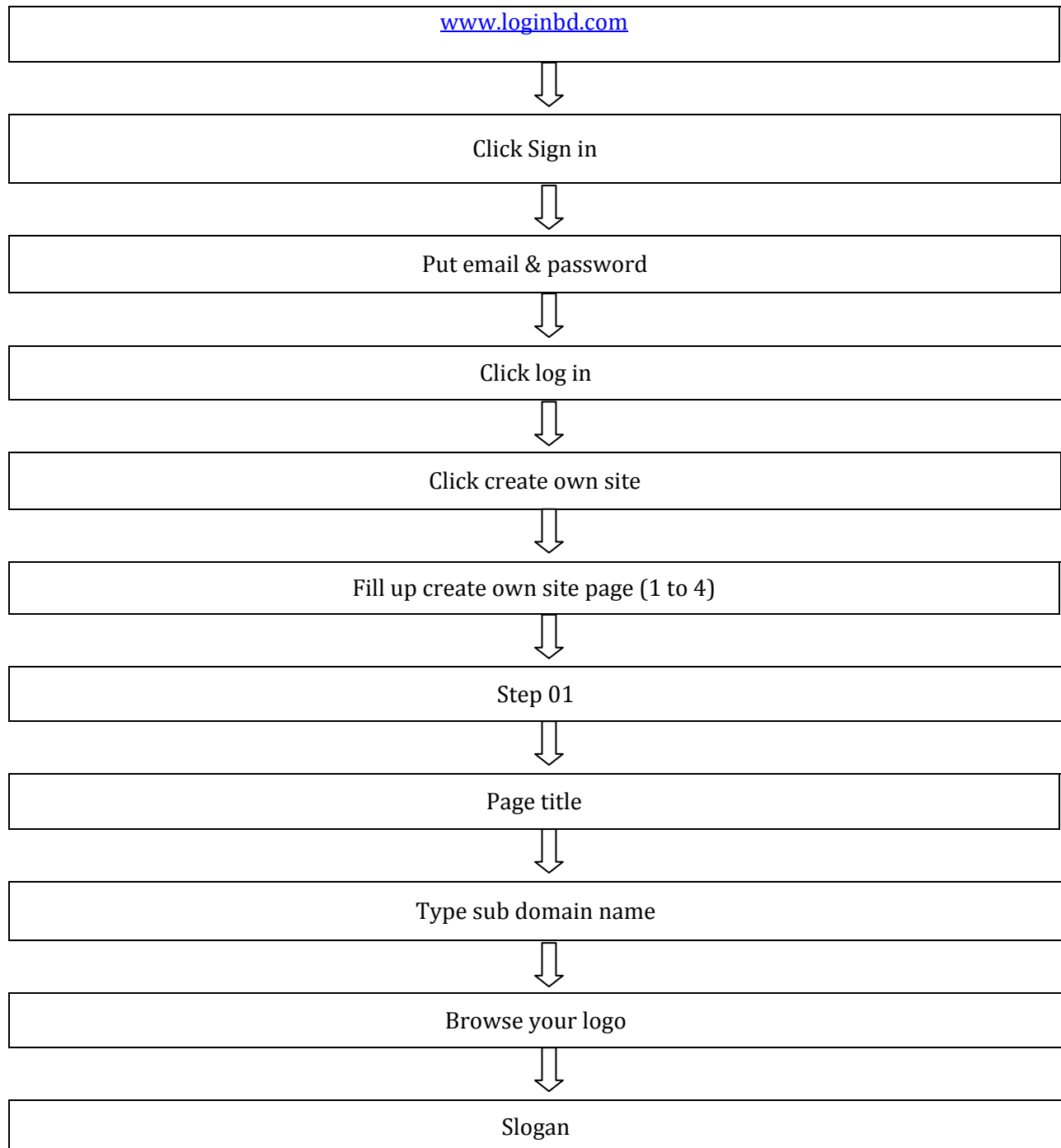
Successfully Complete Sign in Process

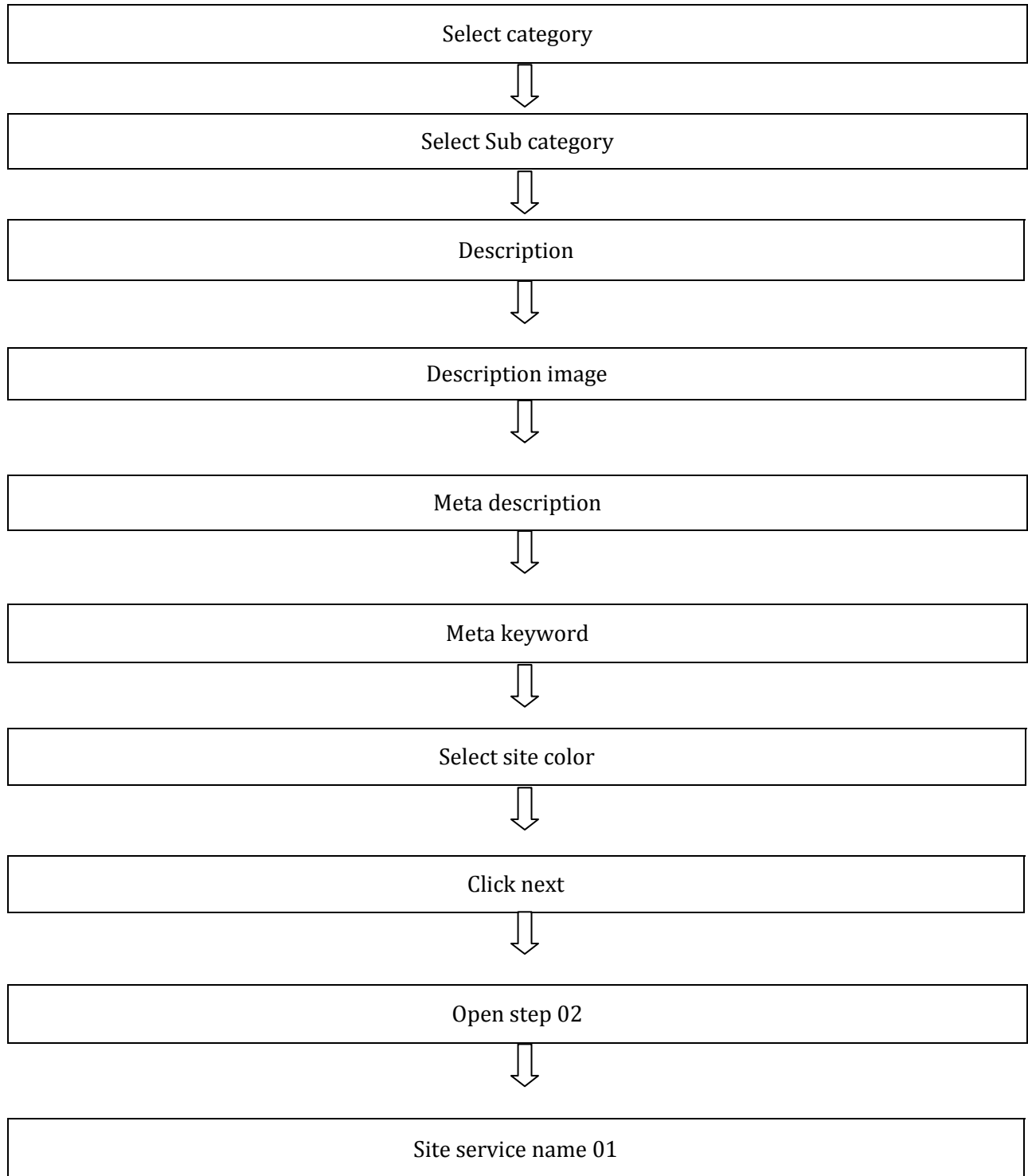


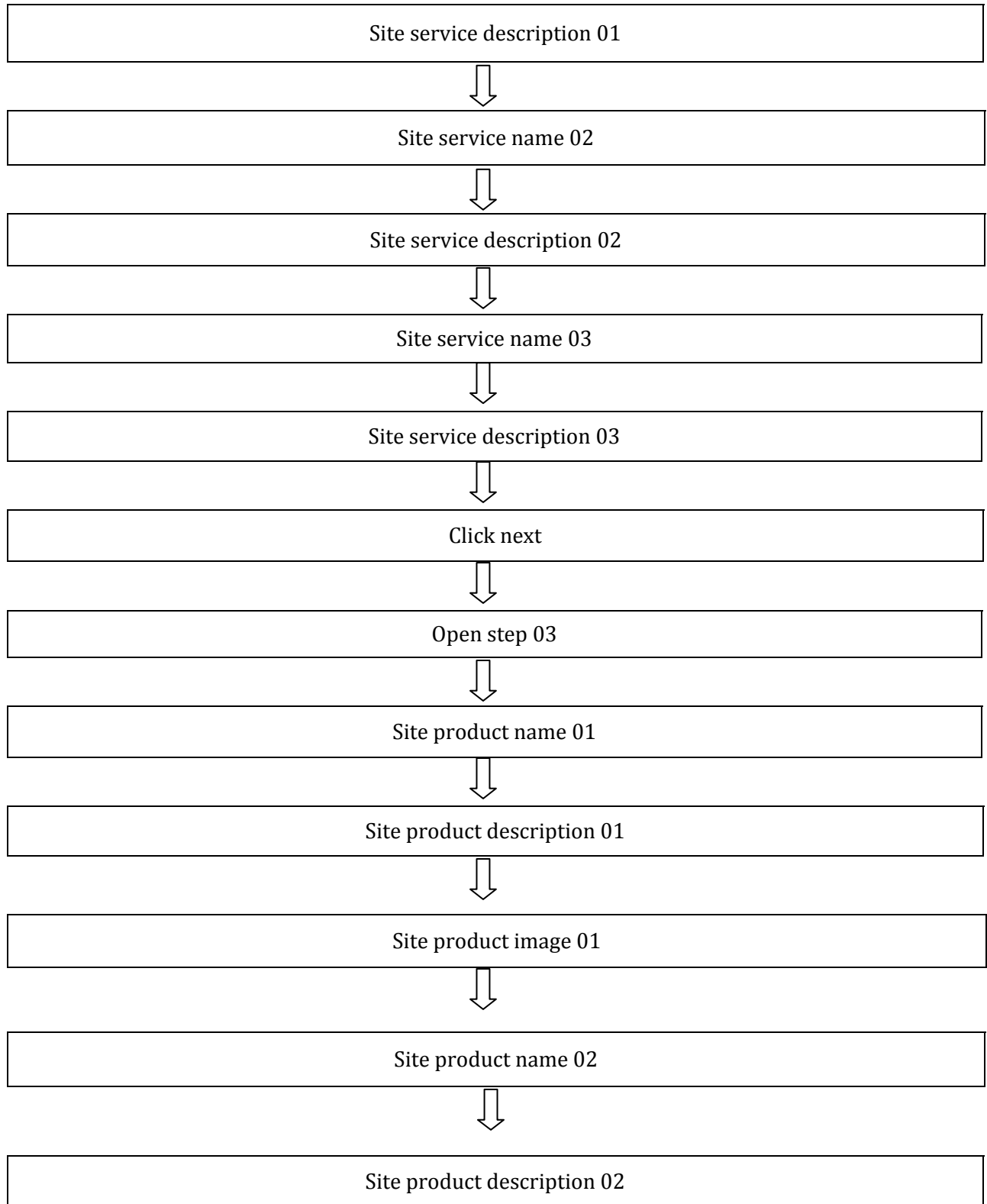
Then you shall access your membership user account

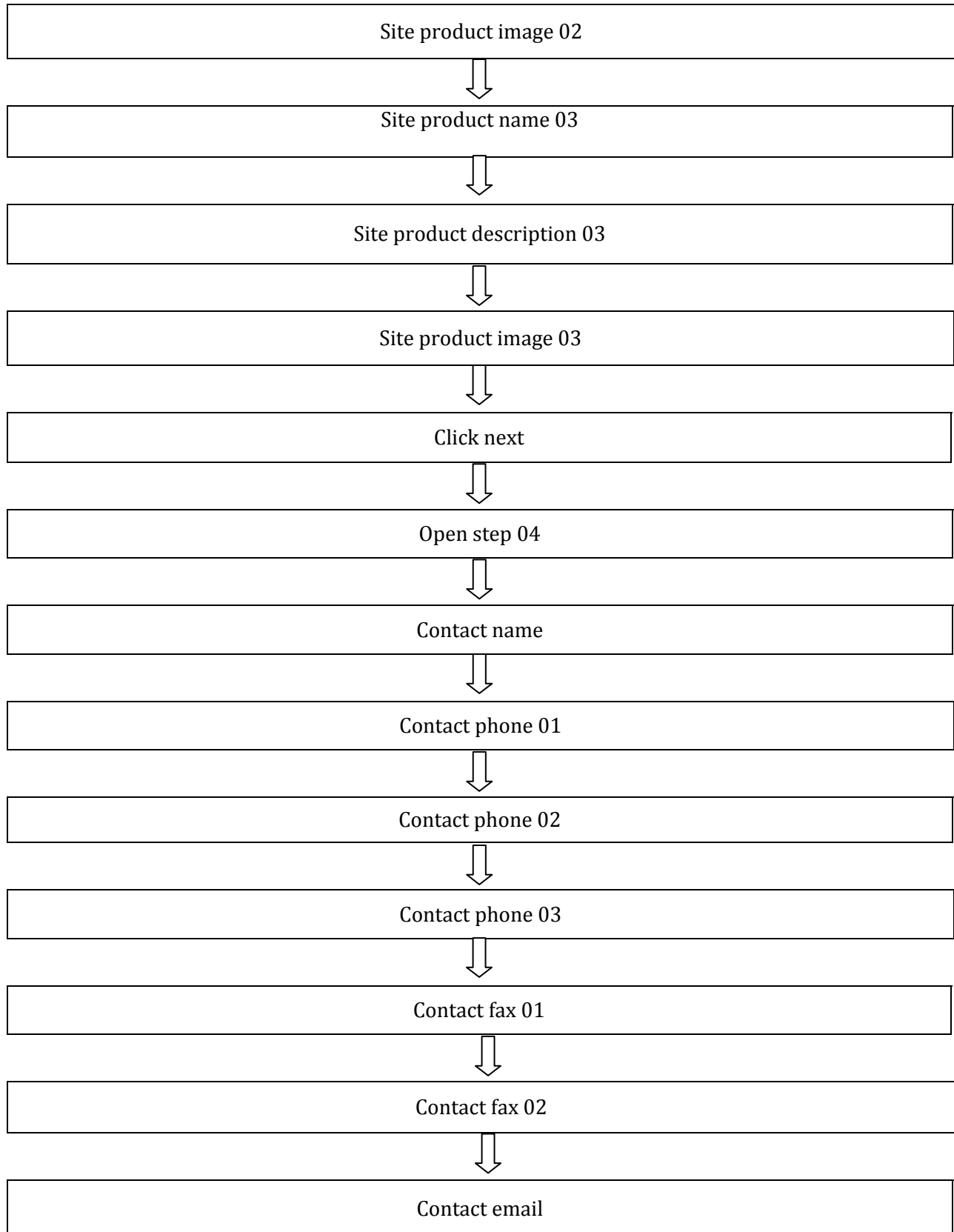
HOW TO CREATE/MAKE YOUR OWN WEBSITE:

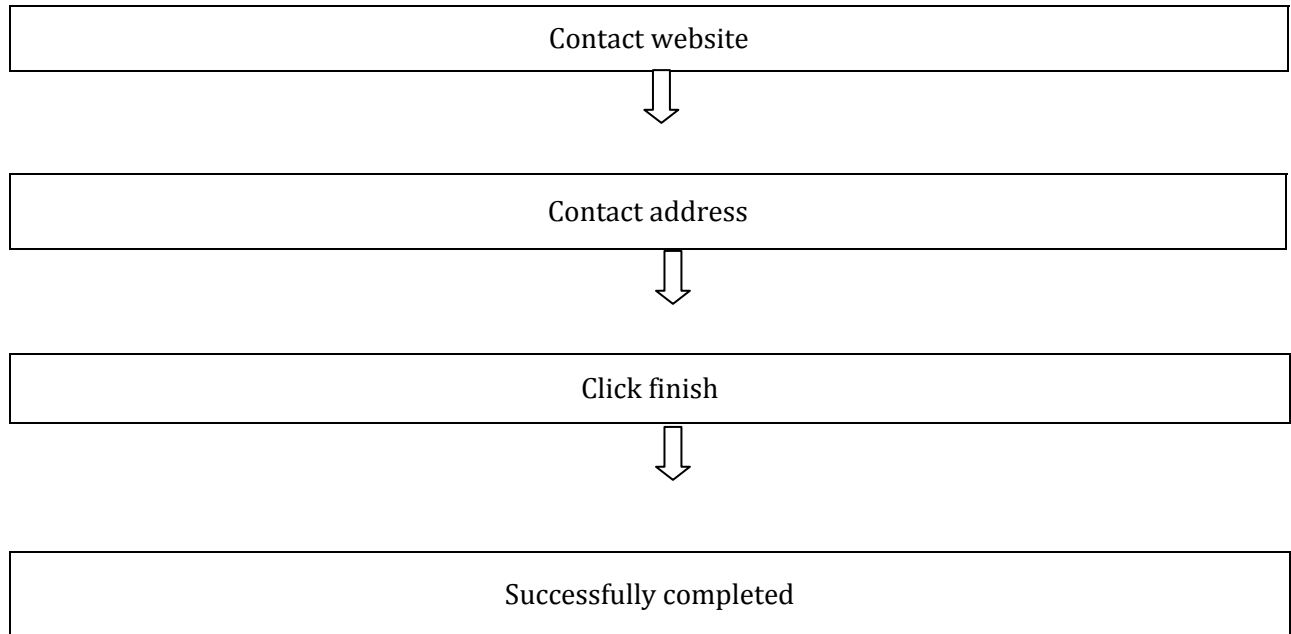
Note: If you are already member for create own site & clear your payment (for 1 page 1500 & more than 1 page 2000) then you can create your own site otherwise you have not access permit.









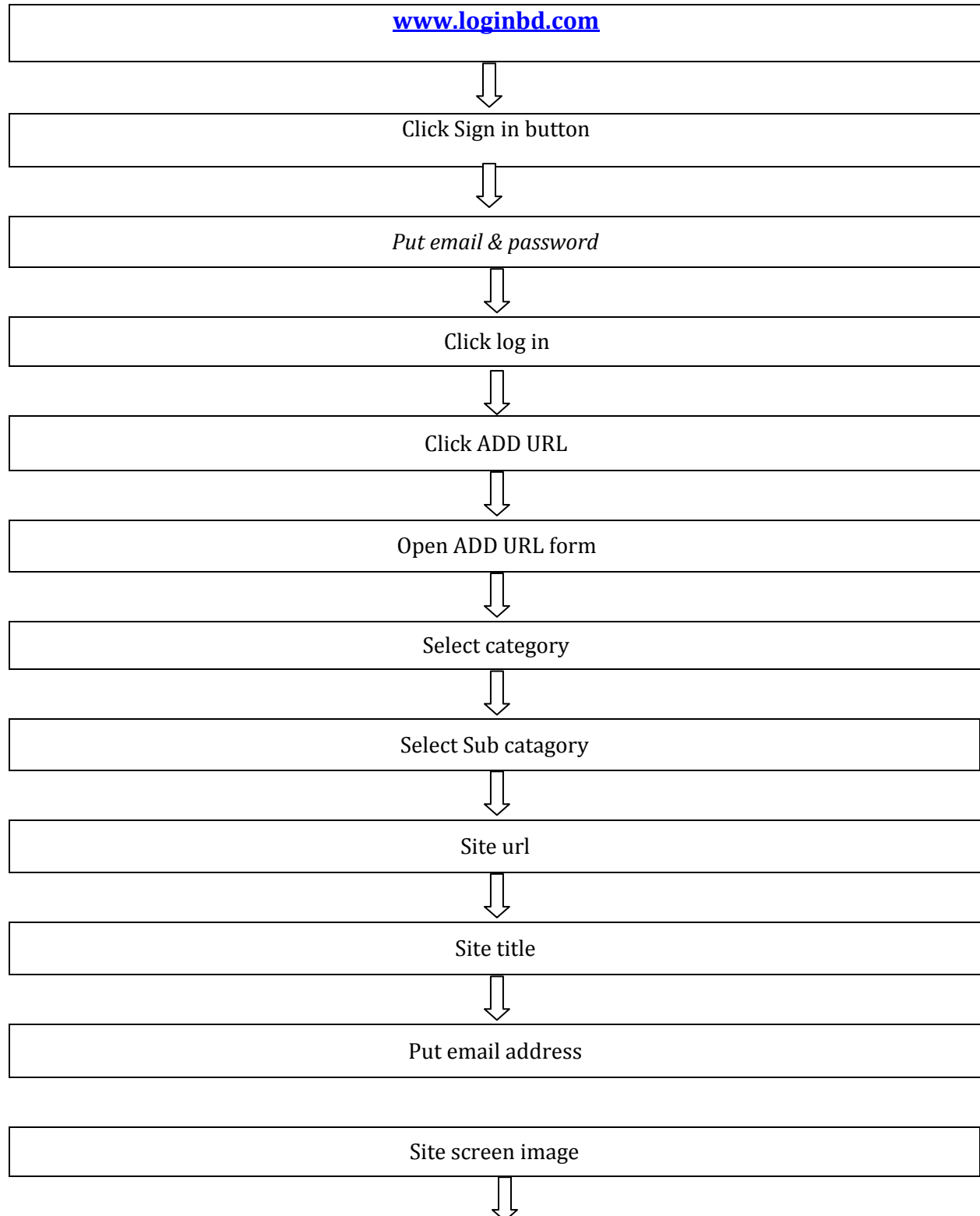


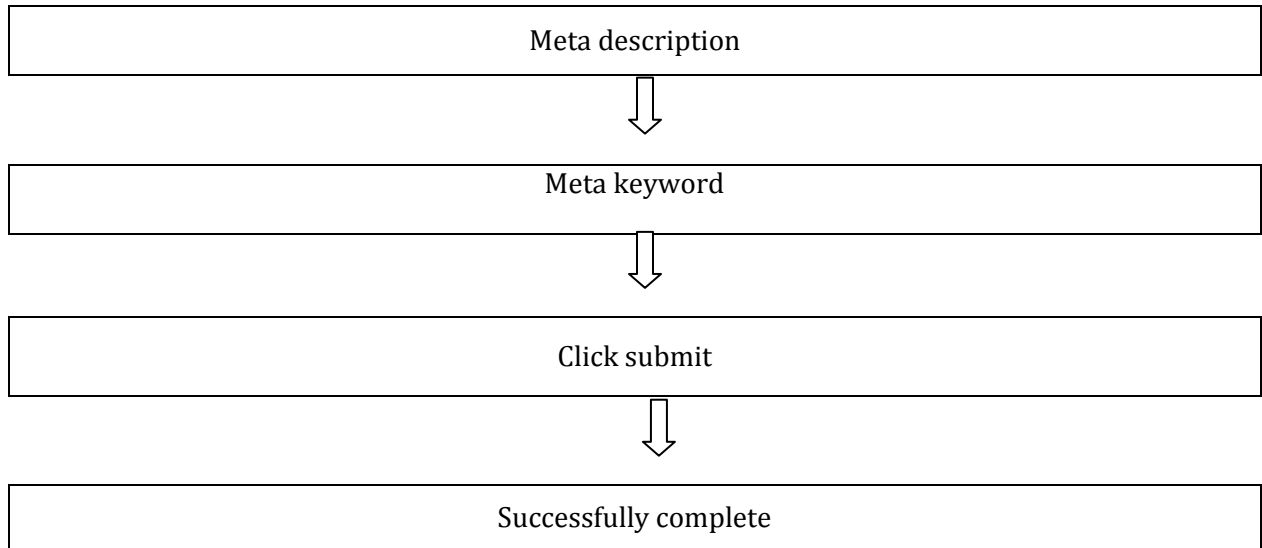
HOW TO SHOW YOUR OWN WEB SITE



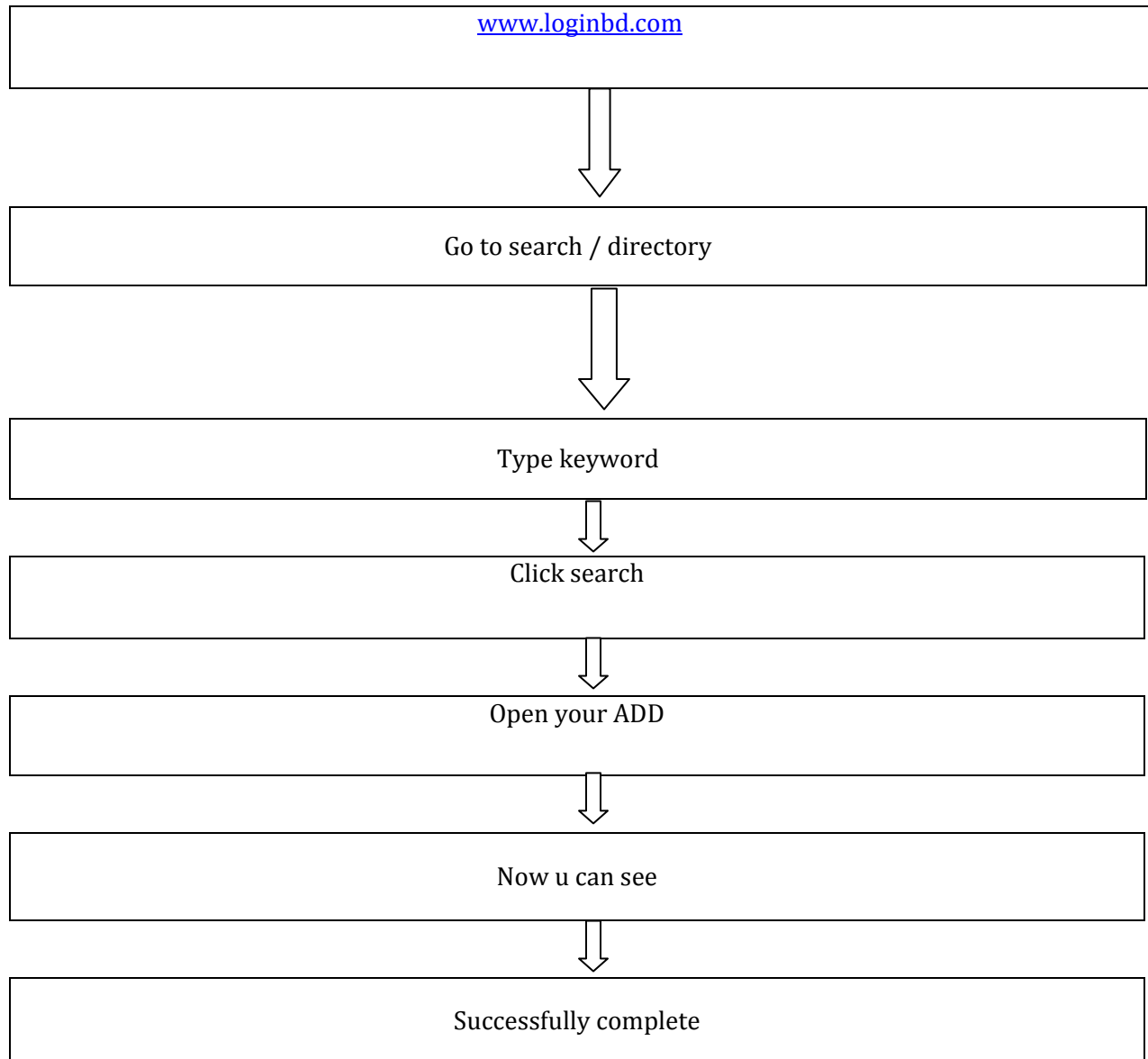
HOW TO CREATE ADD URL

Note: Already you are member for ADD URL & complete your payment (tk: 1000) then you can access otherwise you access is not permit



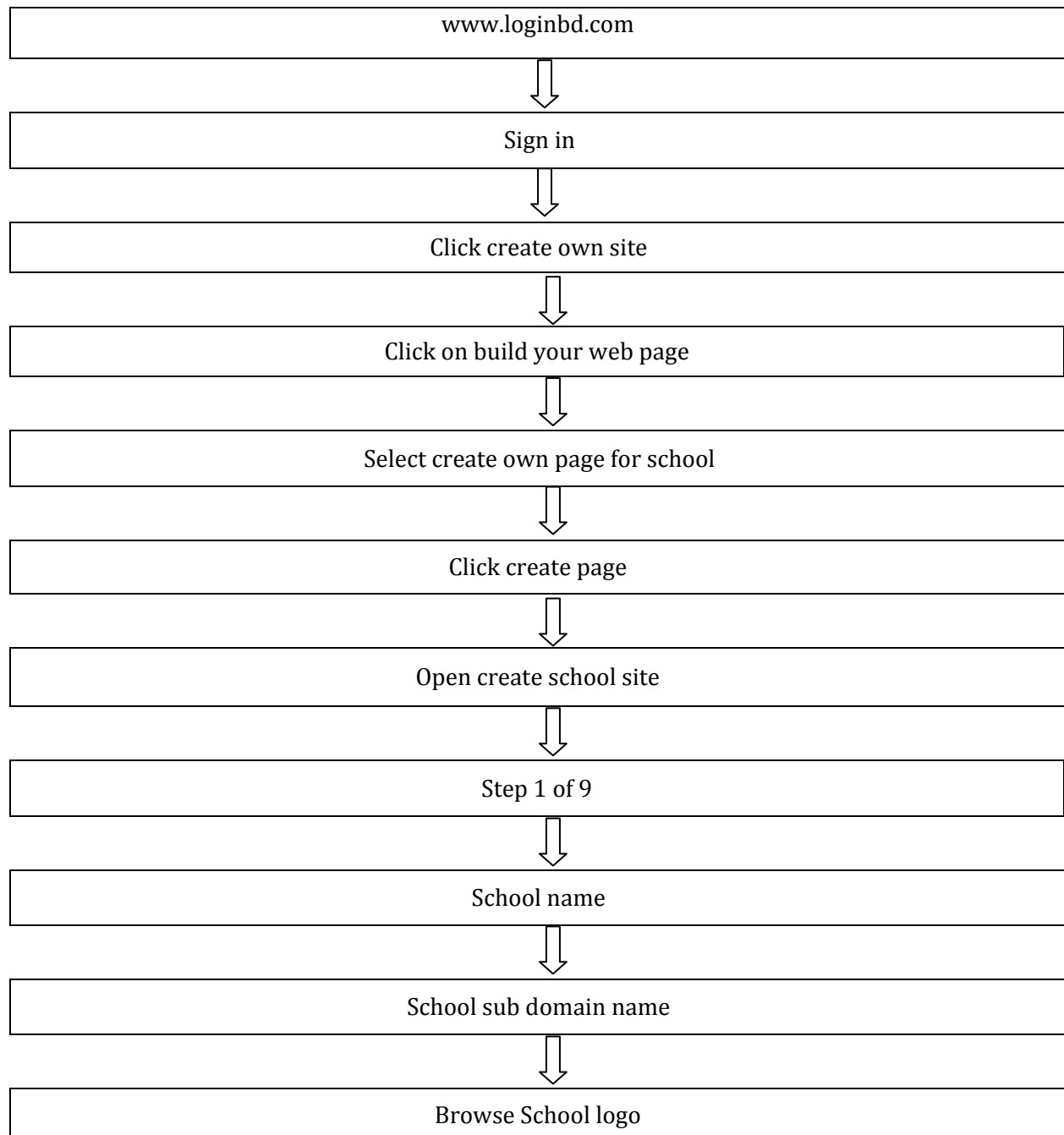


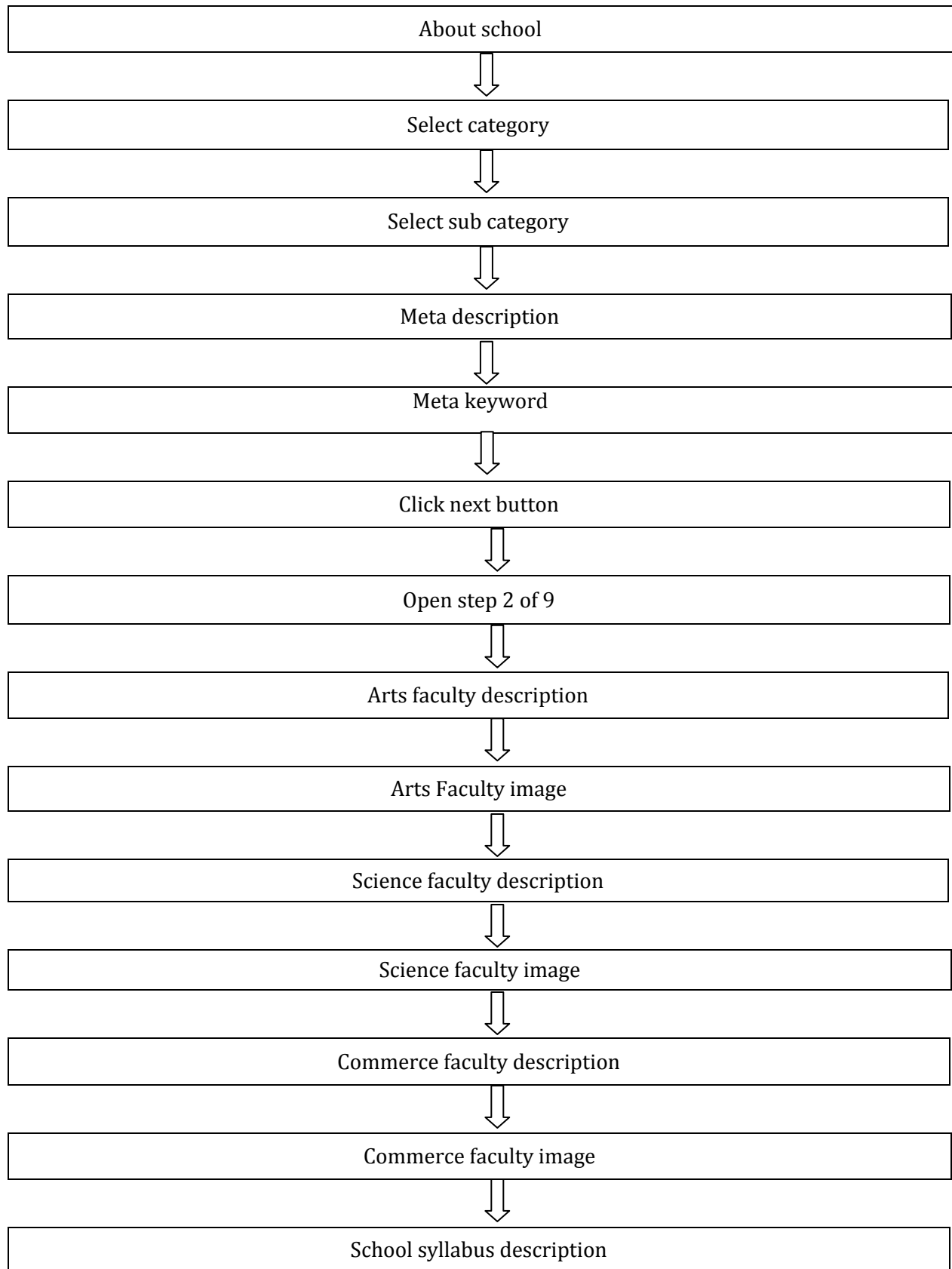
HOW TO SHOW YOUR ADD URL

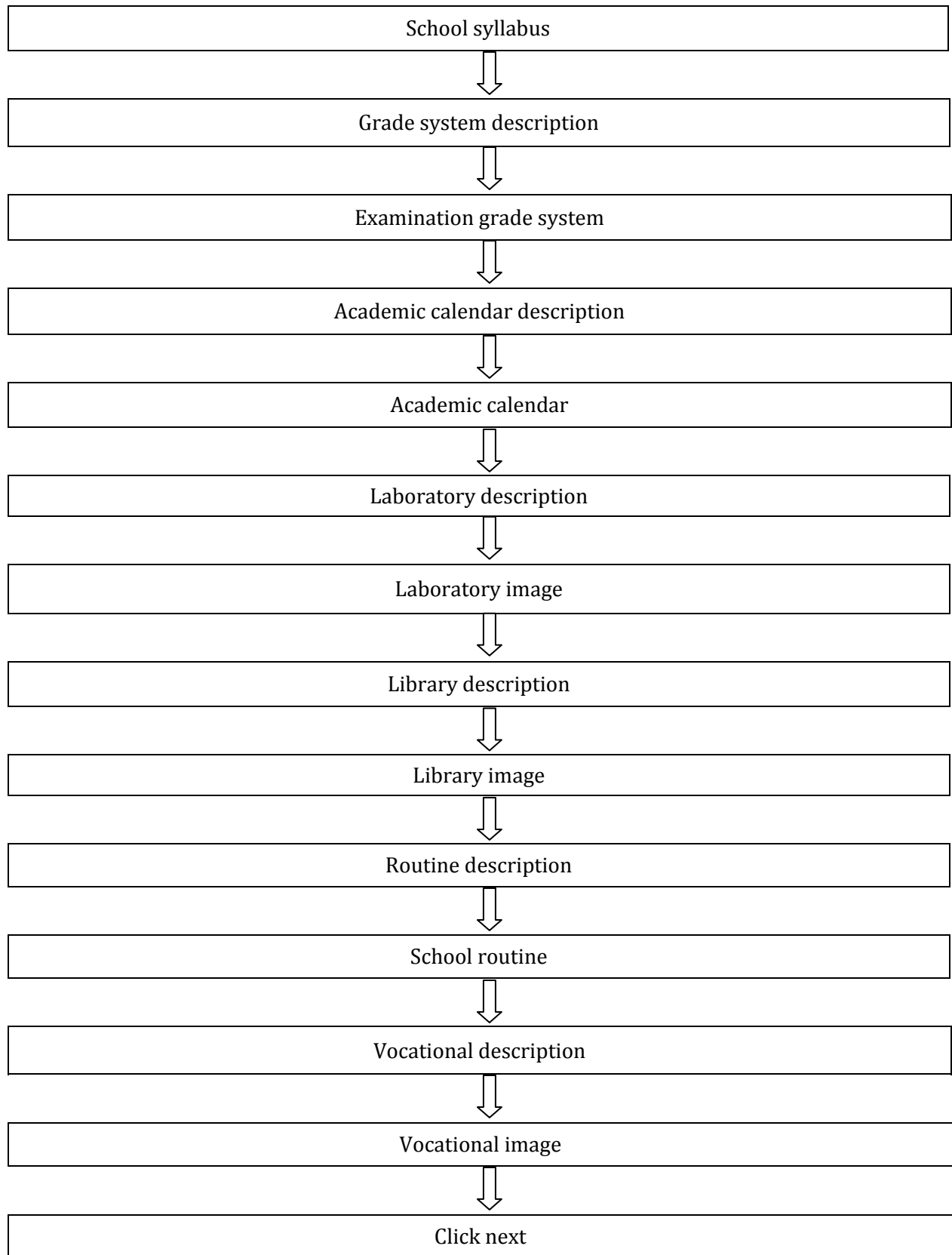


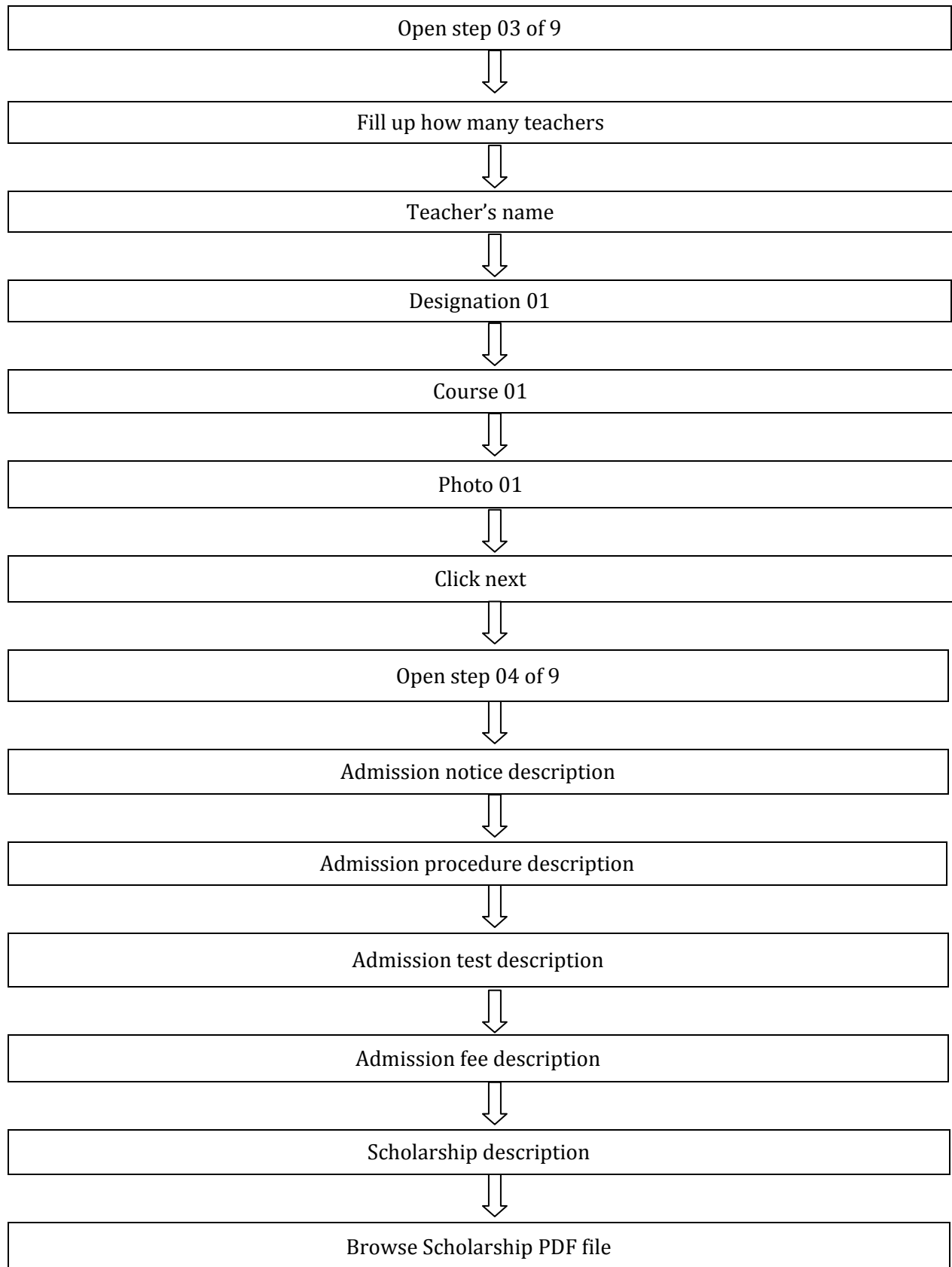
HOW TO CREATE SCHOOL SITE

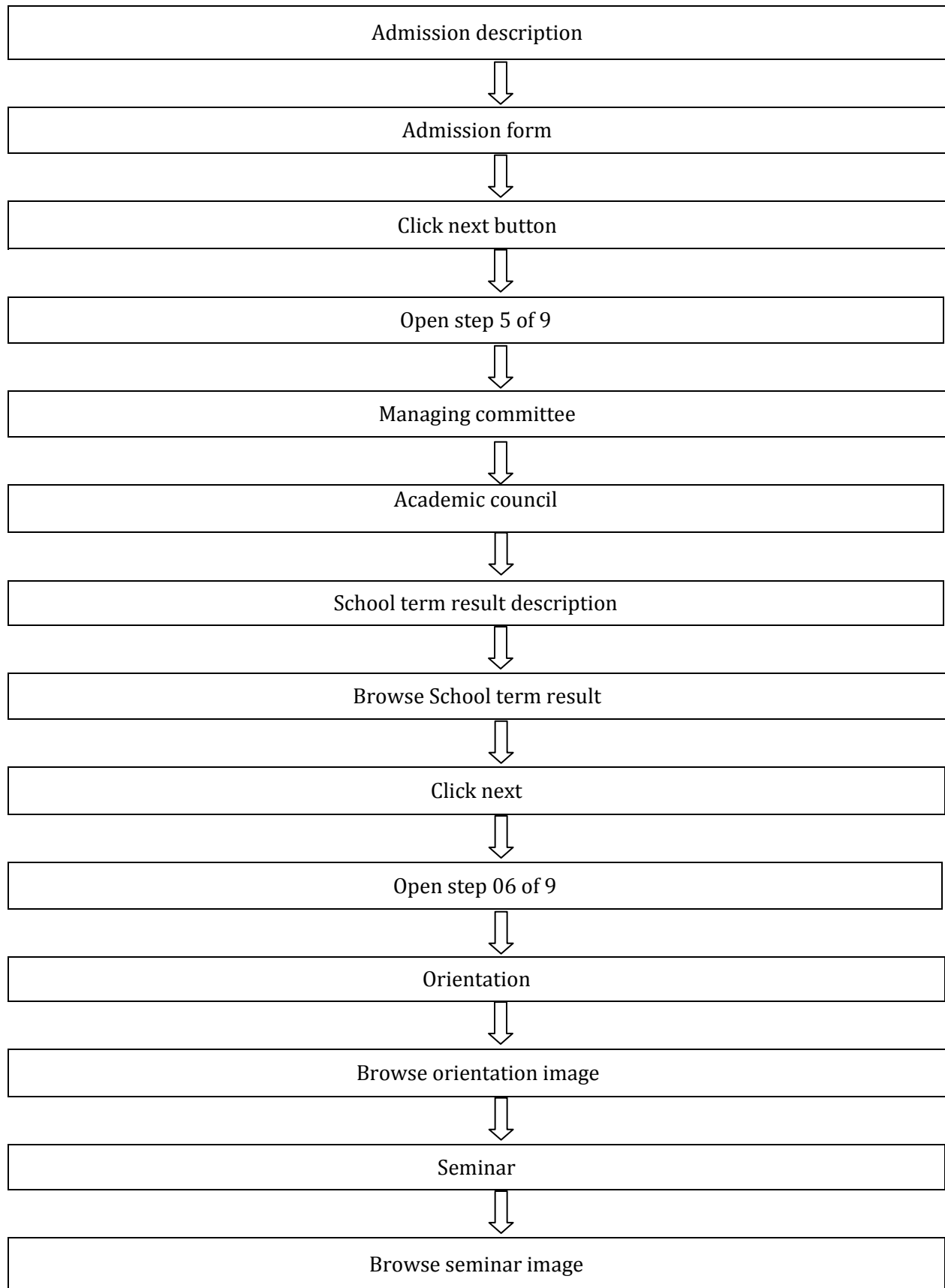
Note: If you are already member for create own site & clear your payment for more than 01 page tk 2000 then you can create your school site otherwise you have not access permit.

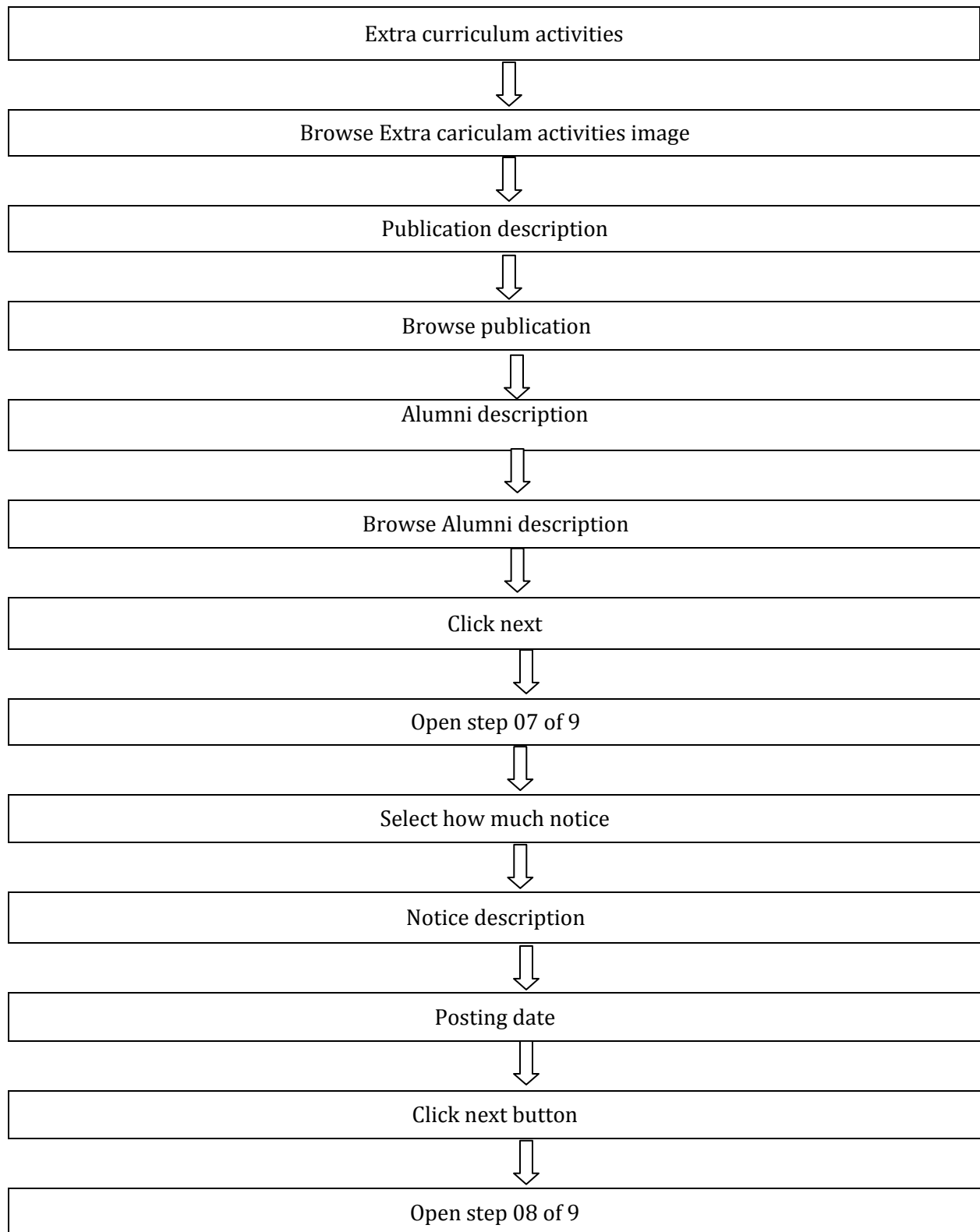


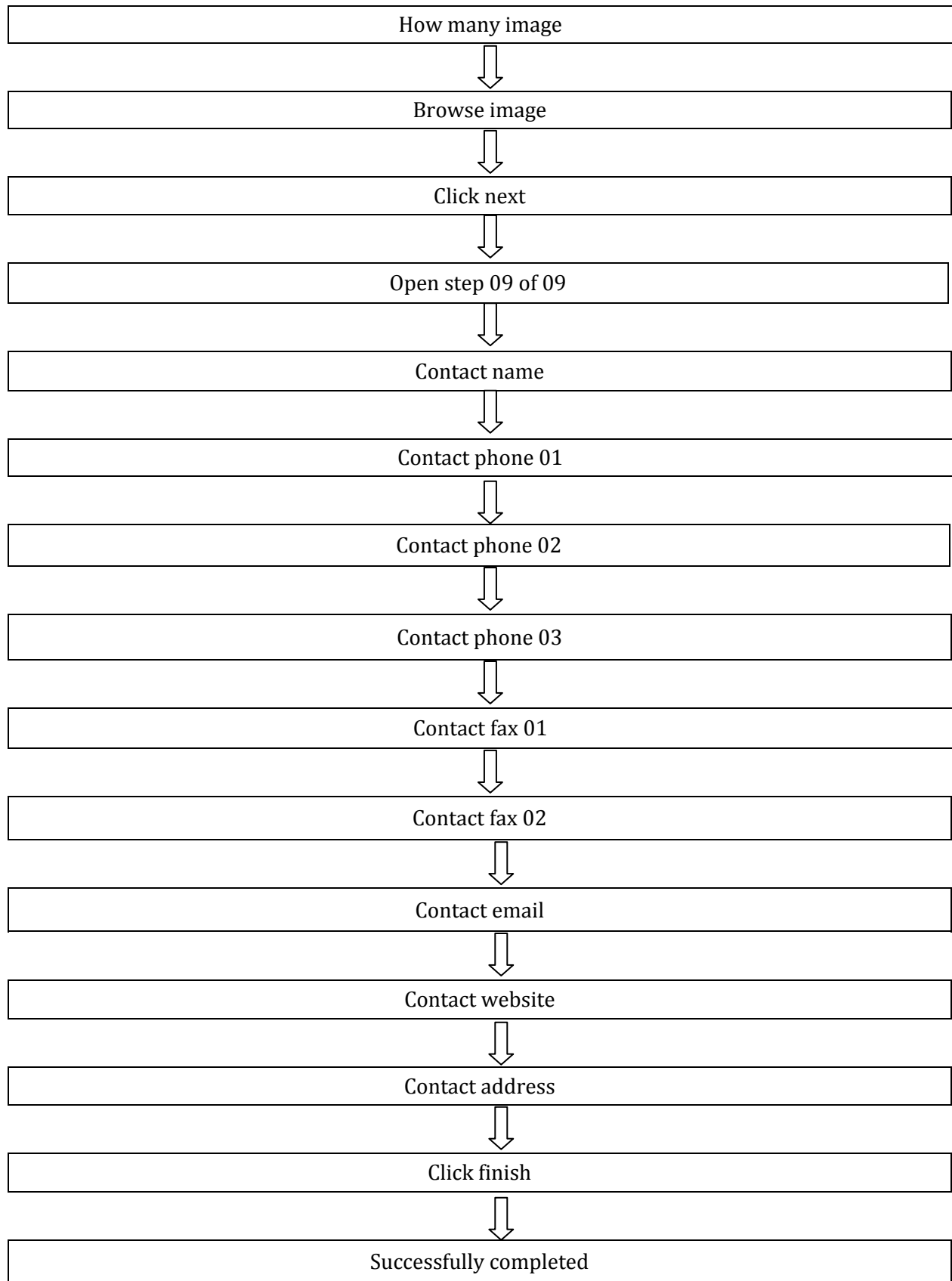




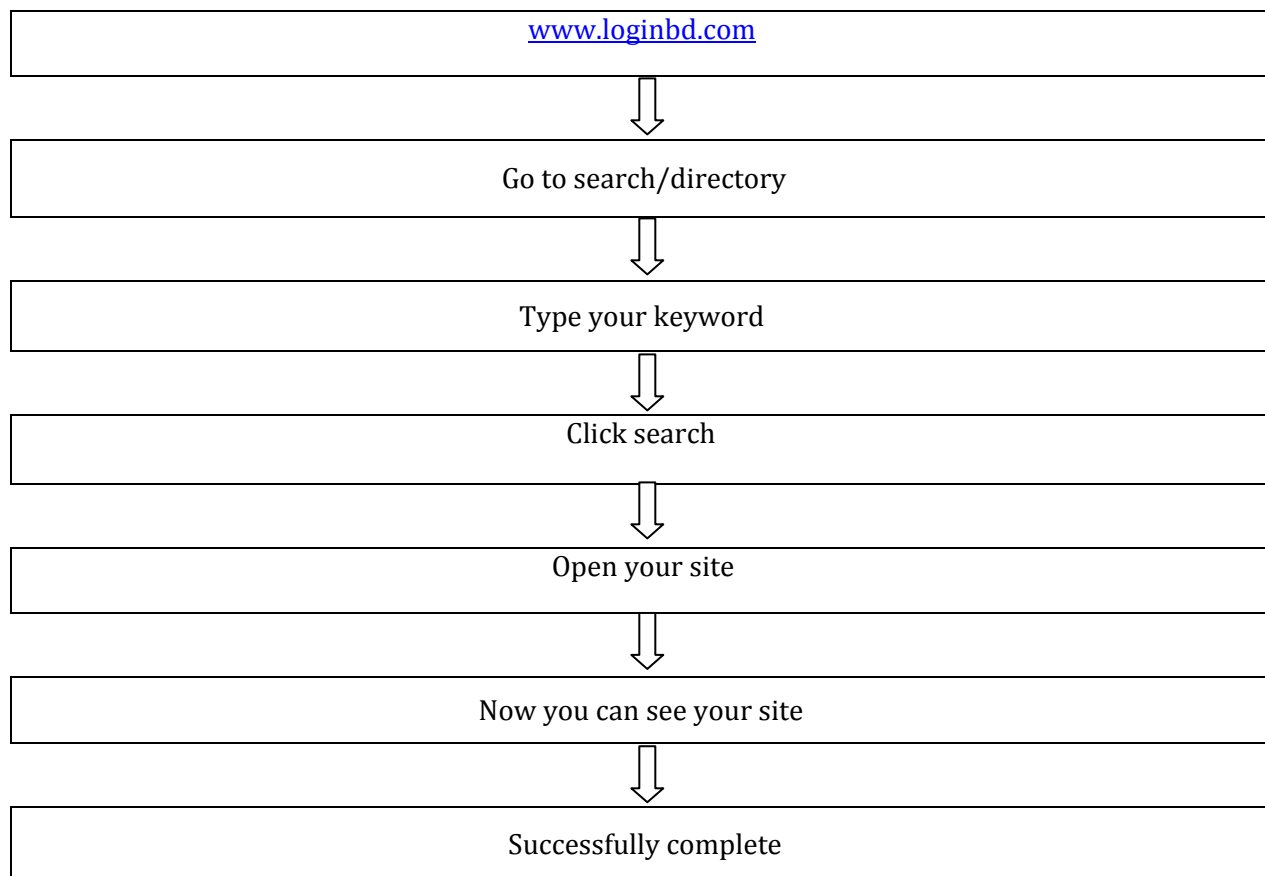




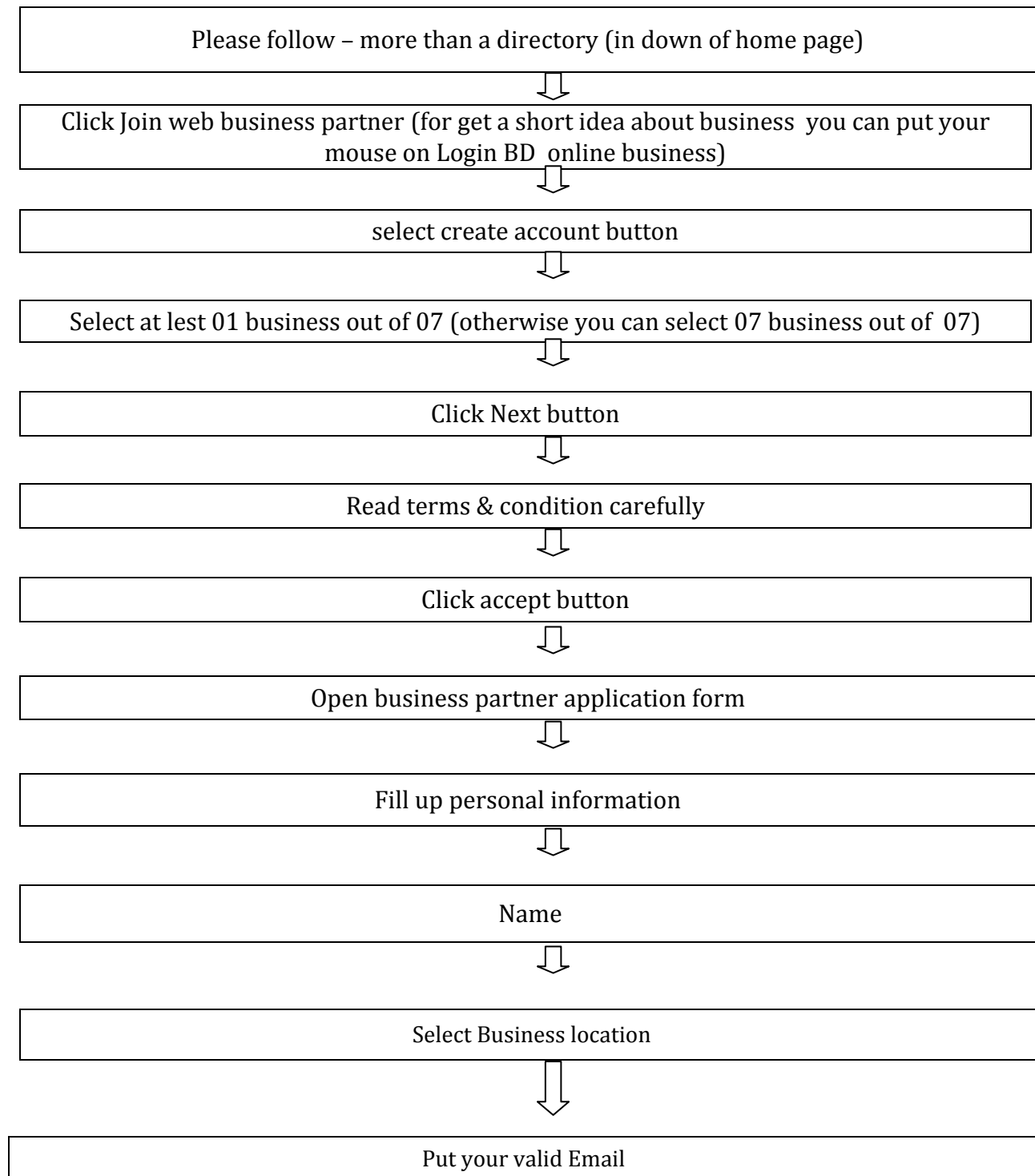


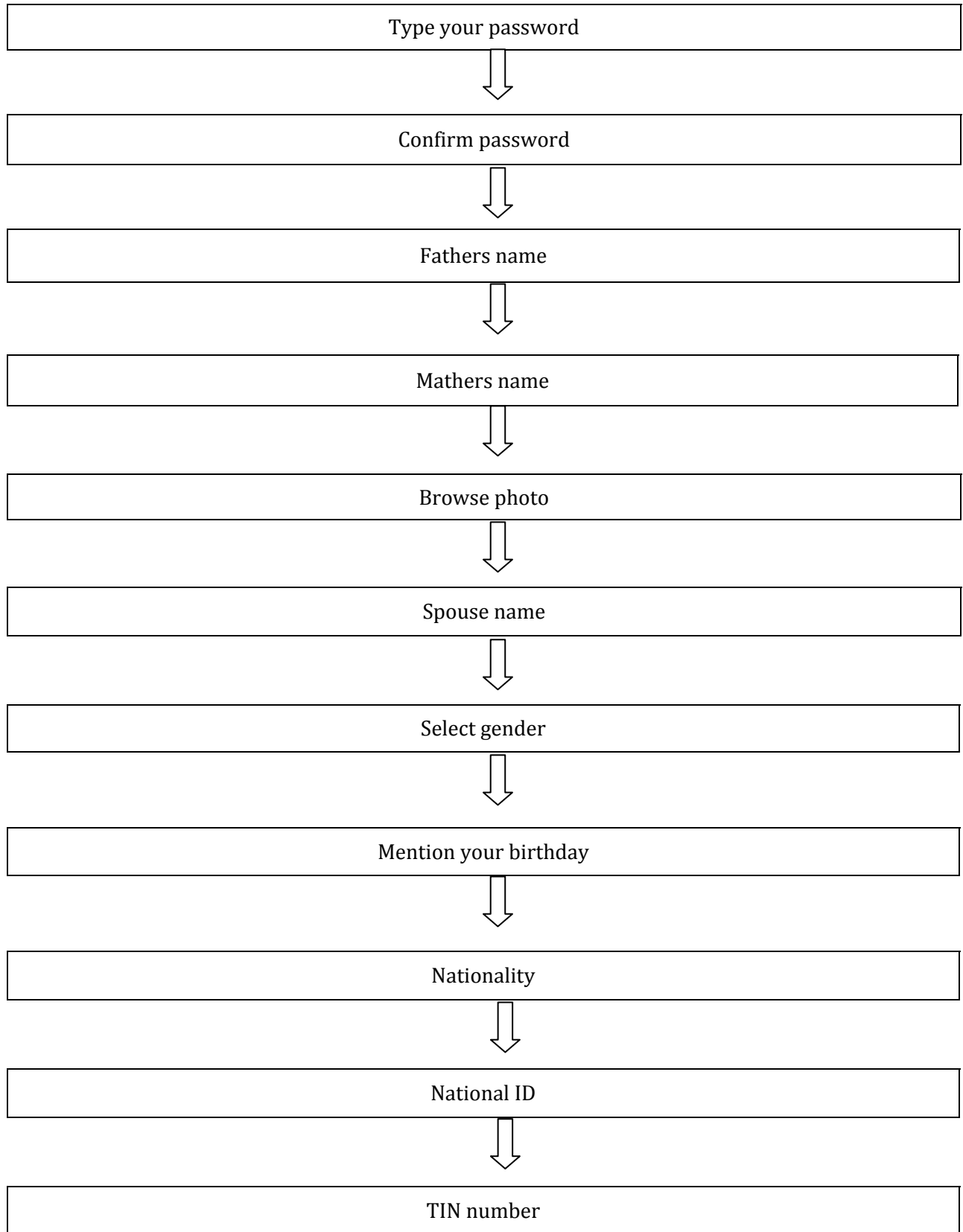


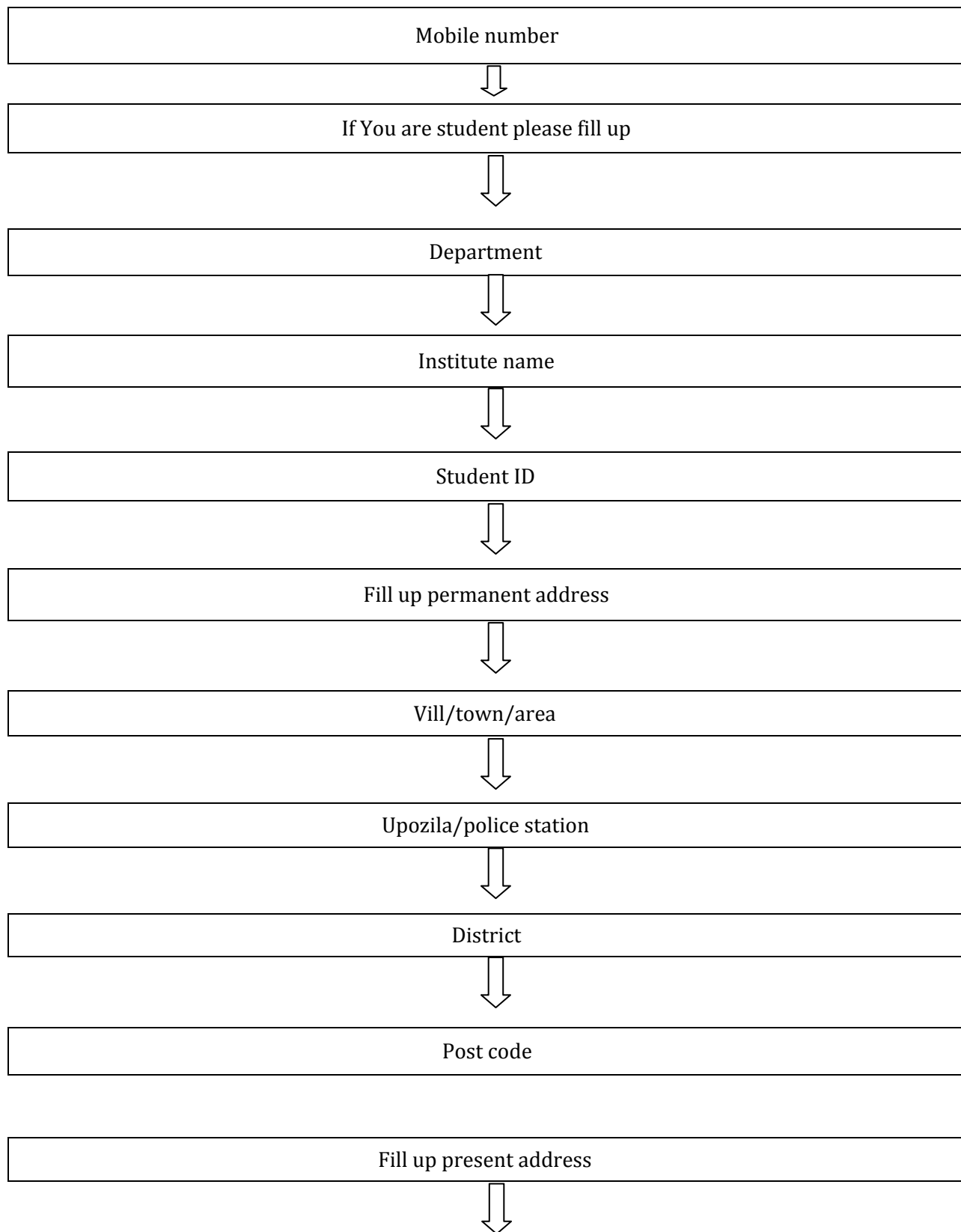
HOW TO SHOW YOUR SCHOOL SITE

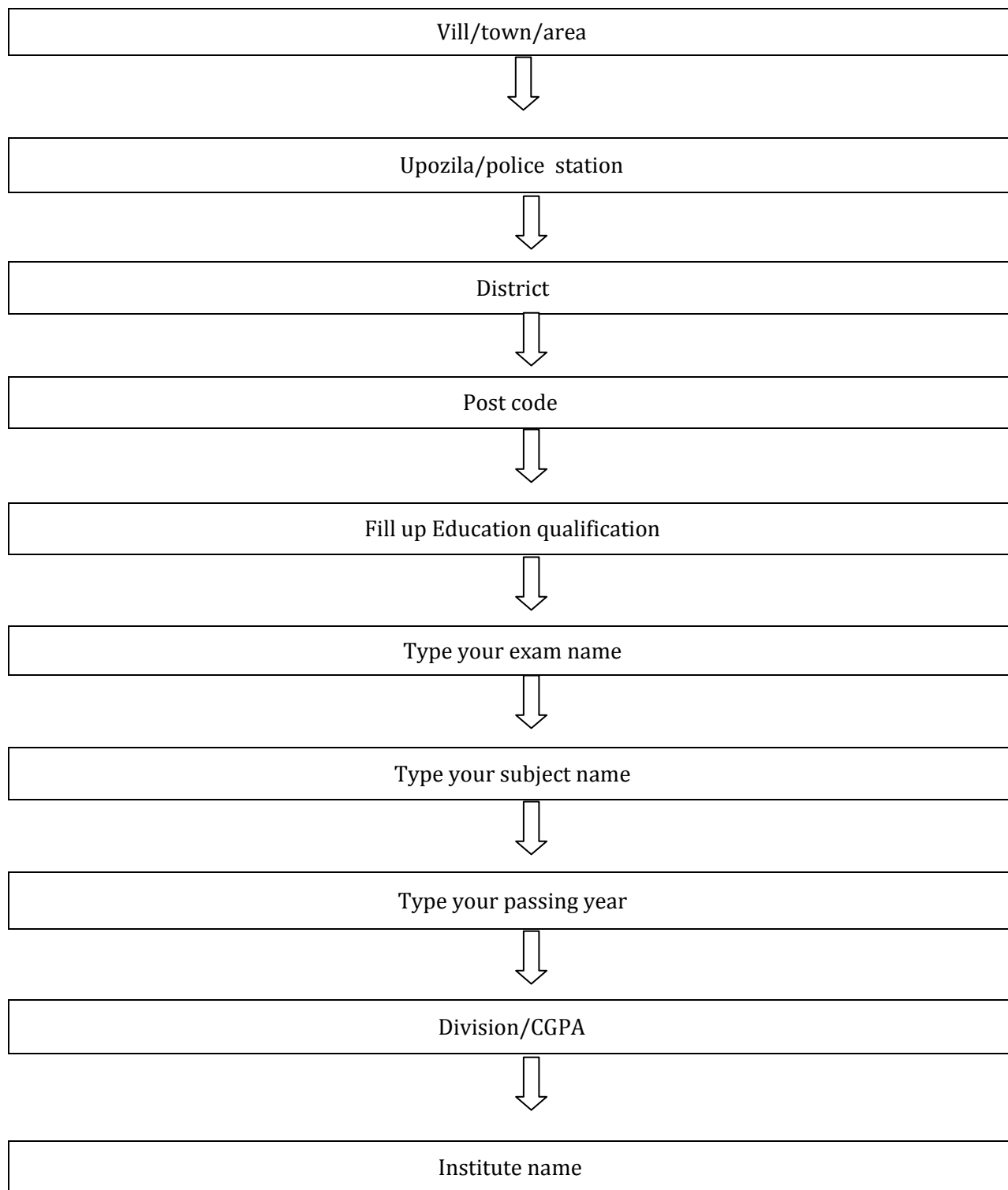


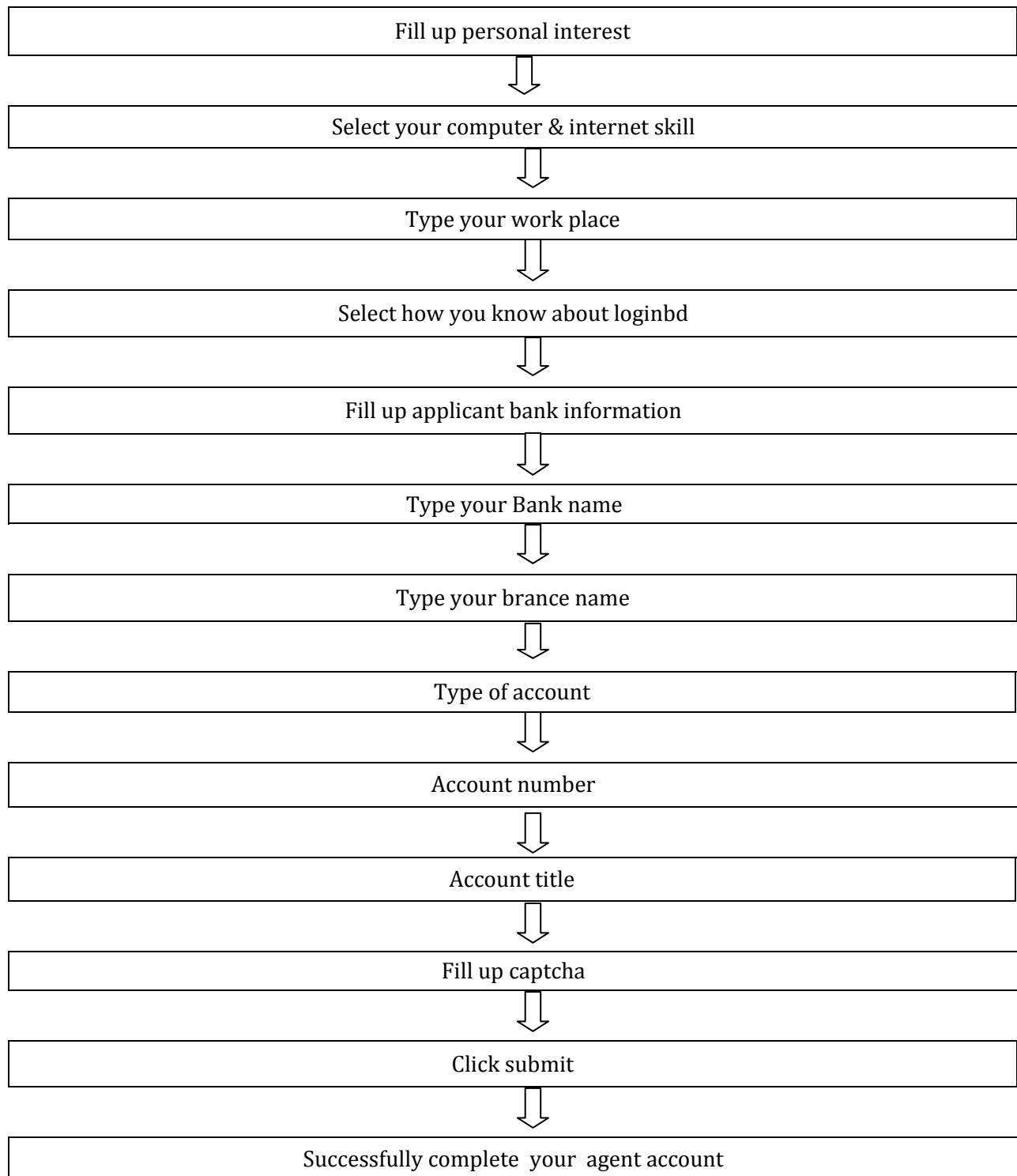
HOW TO MAKE AGENT ACCOUNT



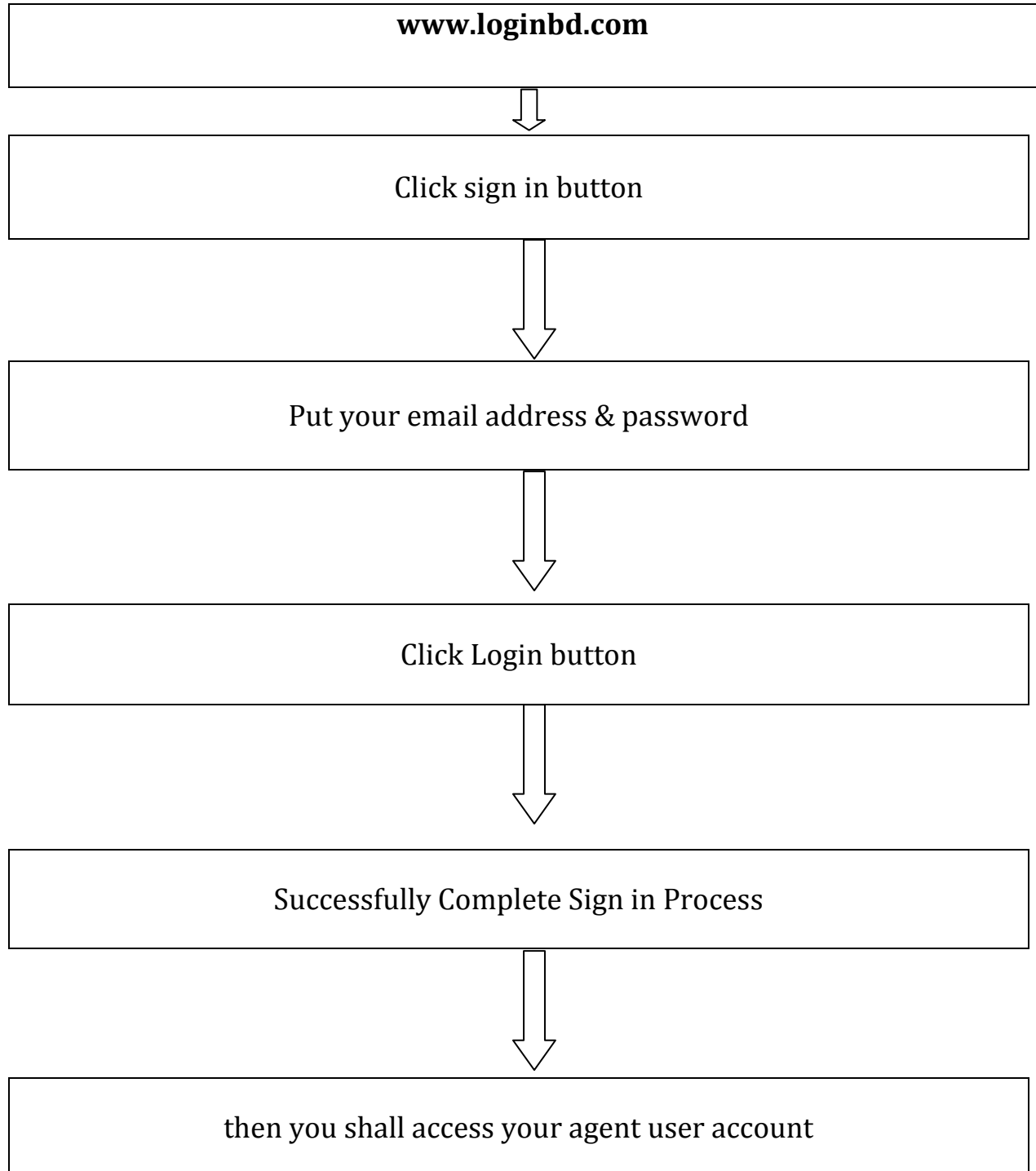




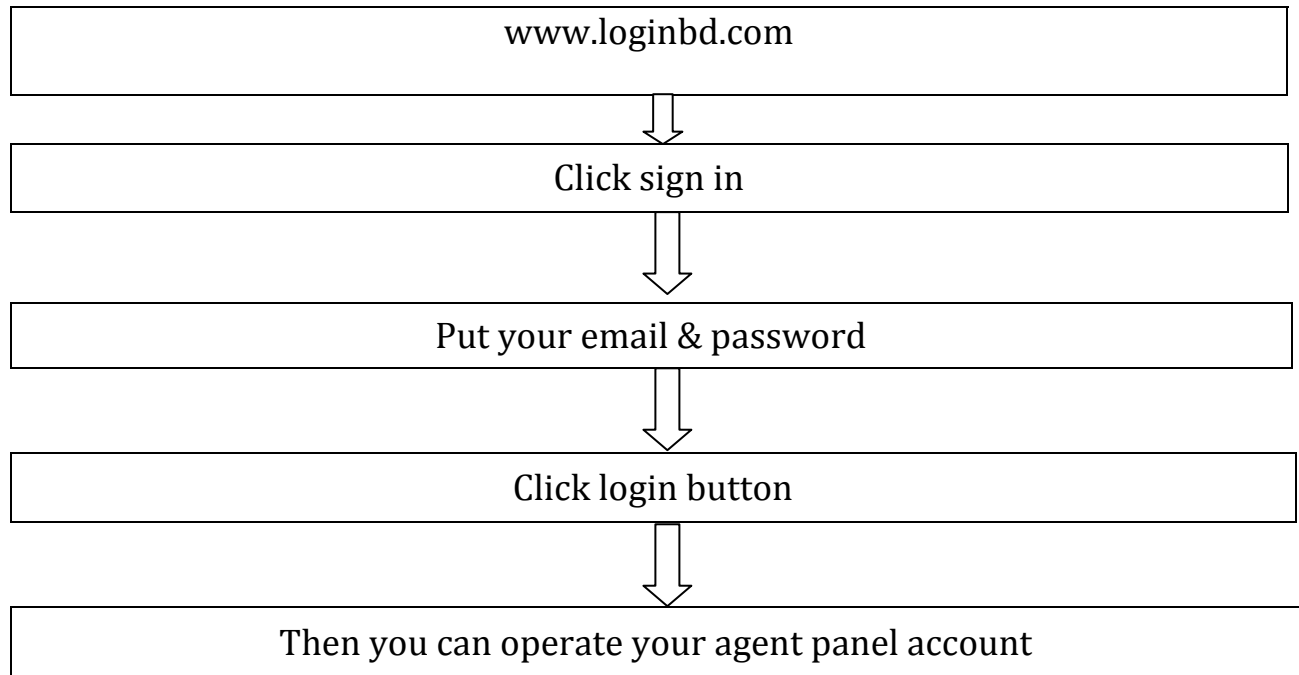




HOW TO USE YOUR AGENT ACCOUNT



HOW TO OPERATE ON AGENT PANEL



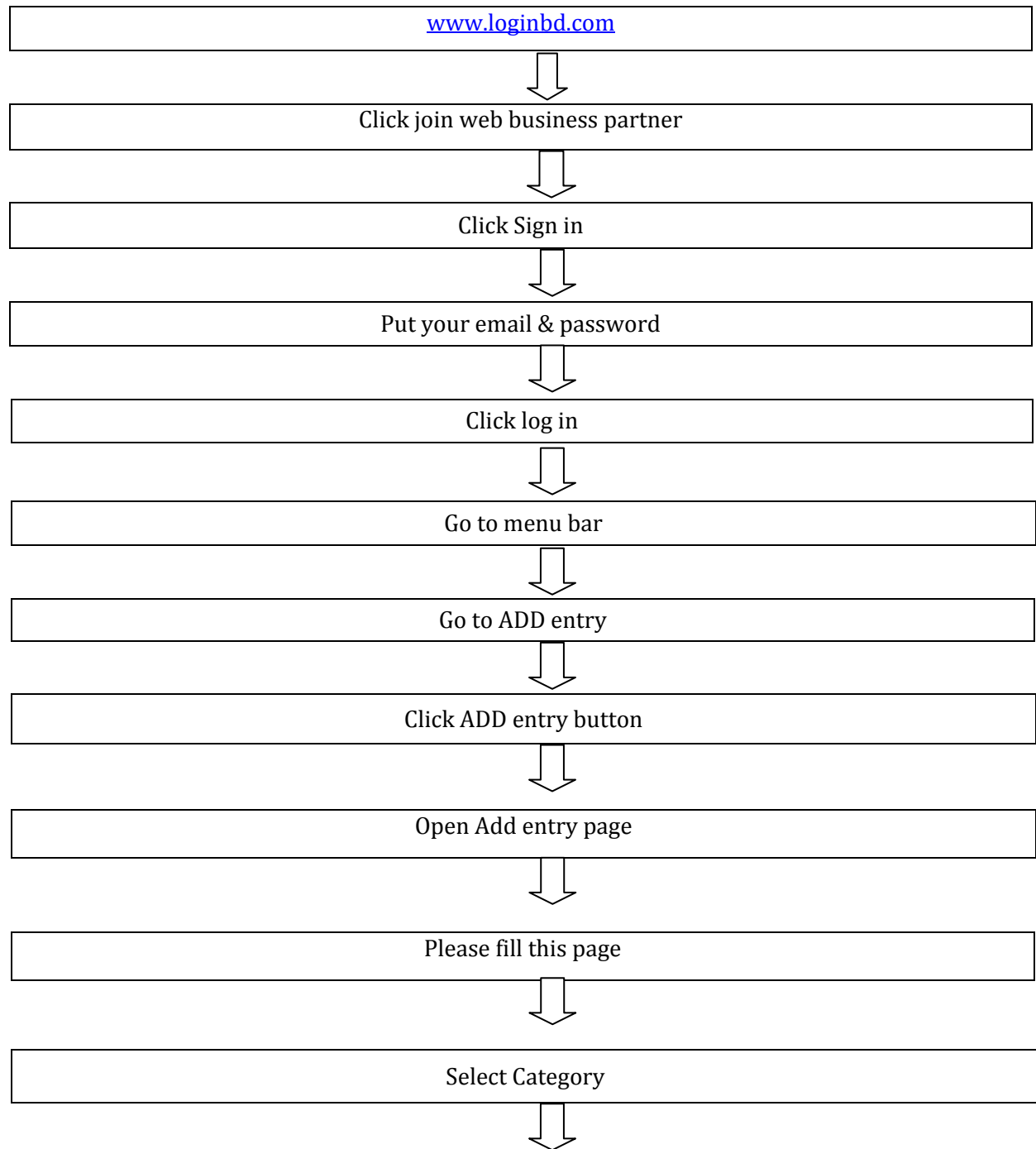
AGENT PANEL MENUAL DETAILS:

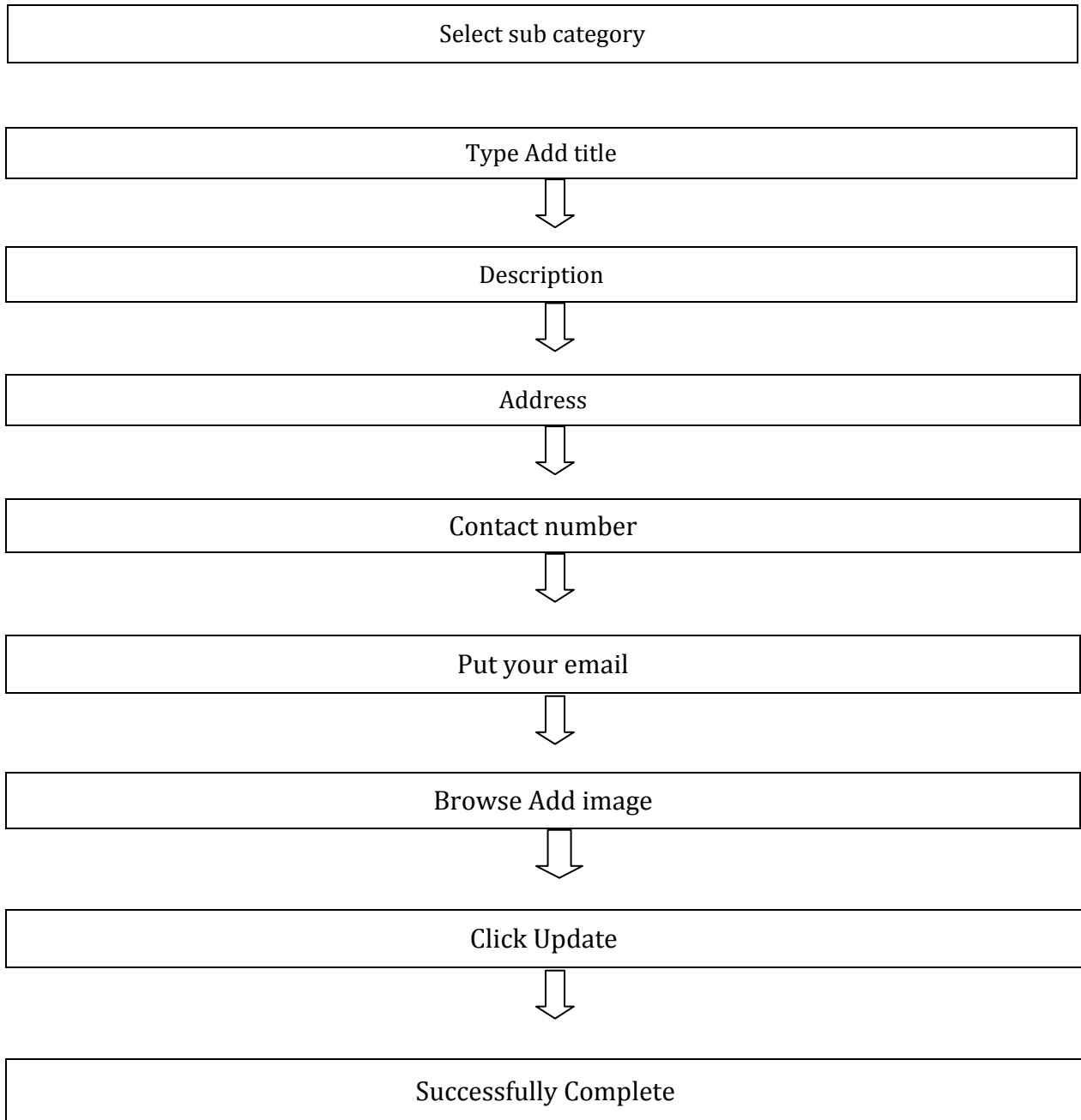
1. Home Page : Here you can see your account home page
2. Profile : You can see & edit your profile, can check your inbox, & you can also change your password
3. User Add : you can see, create & edit ADD URL, CREATE OWN SITE, SCHOOL SITE, LOWYER SITE
4. Membership : You can see your members record for ENTRY LEVEL & PROMOTIONAL LEVEL
5. Account : You can see & collect your deposit entry, your balance & your withdraw amount, & get information about transaction
6. Add Entry : You can entry your client advertisement (for advertisement please fill up entry form)
7. Help : For any kind of help please click button

Note: Here you can see, collect & get more information about your business partner panel

HOW TO PUBLISH AGENT BUSINESS IN LOGINBD

Note: At first please deposit your amount for publish your desire business



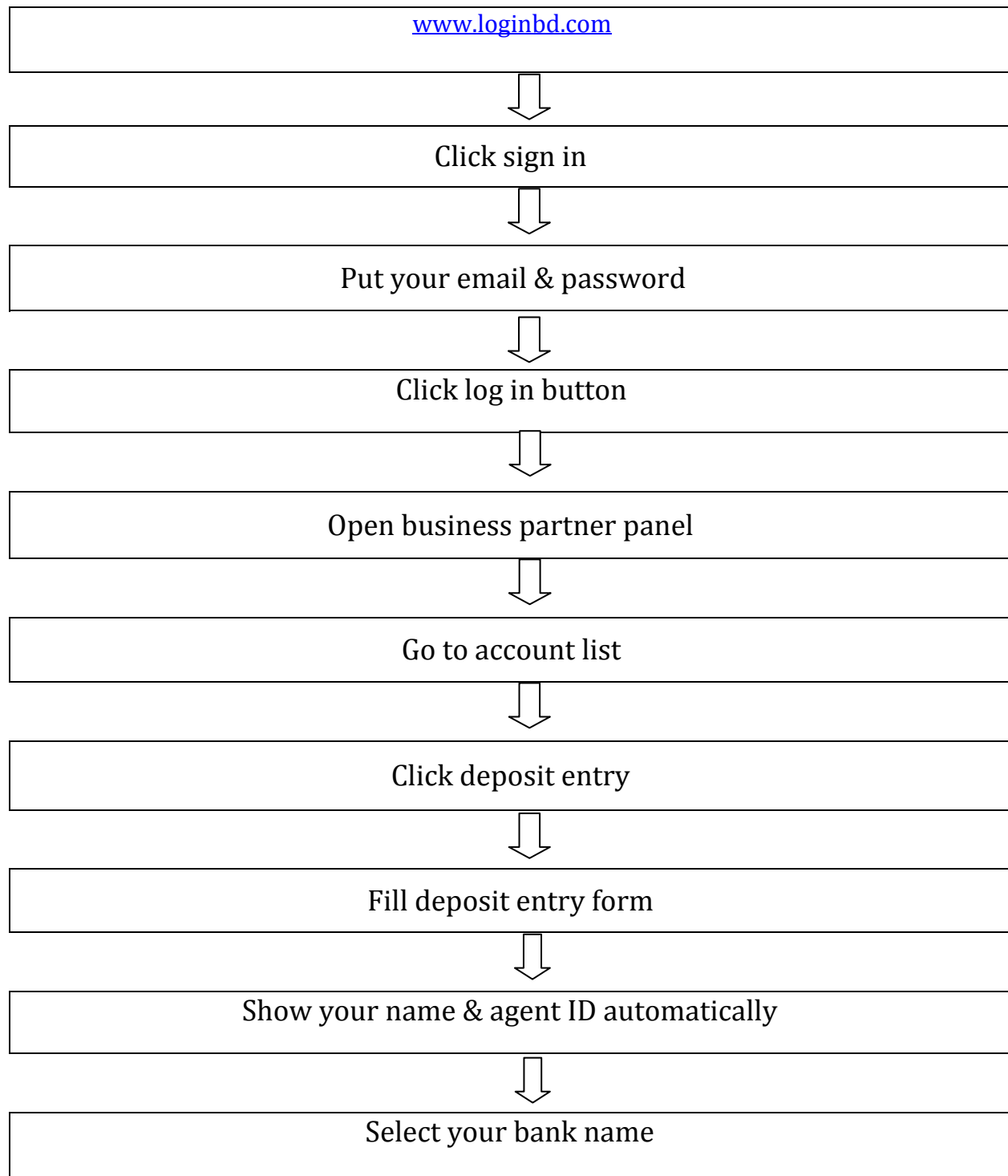


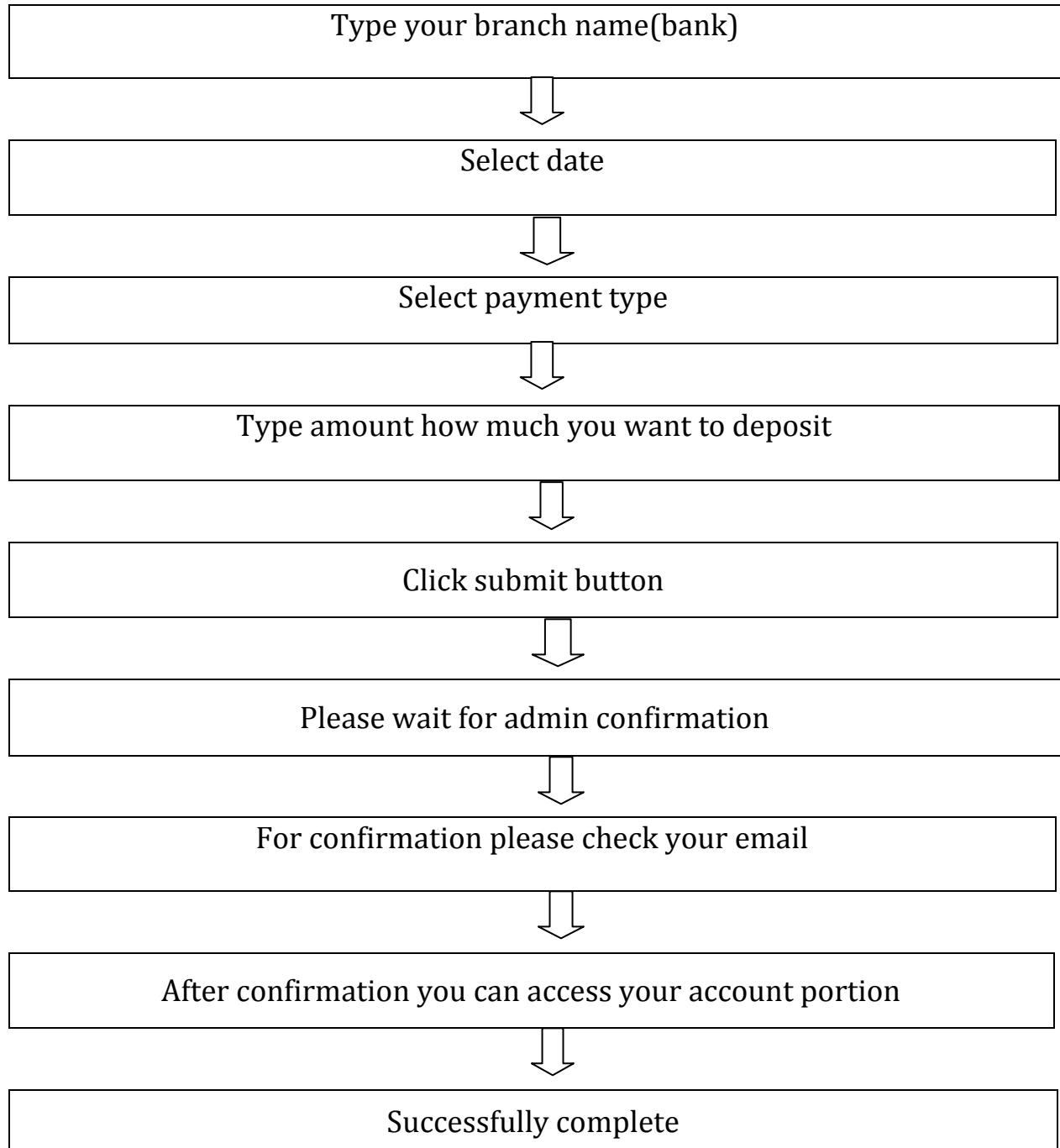
HOW TO SHOW YOUR BUSINESS IN LOGINBD



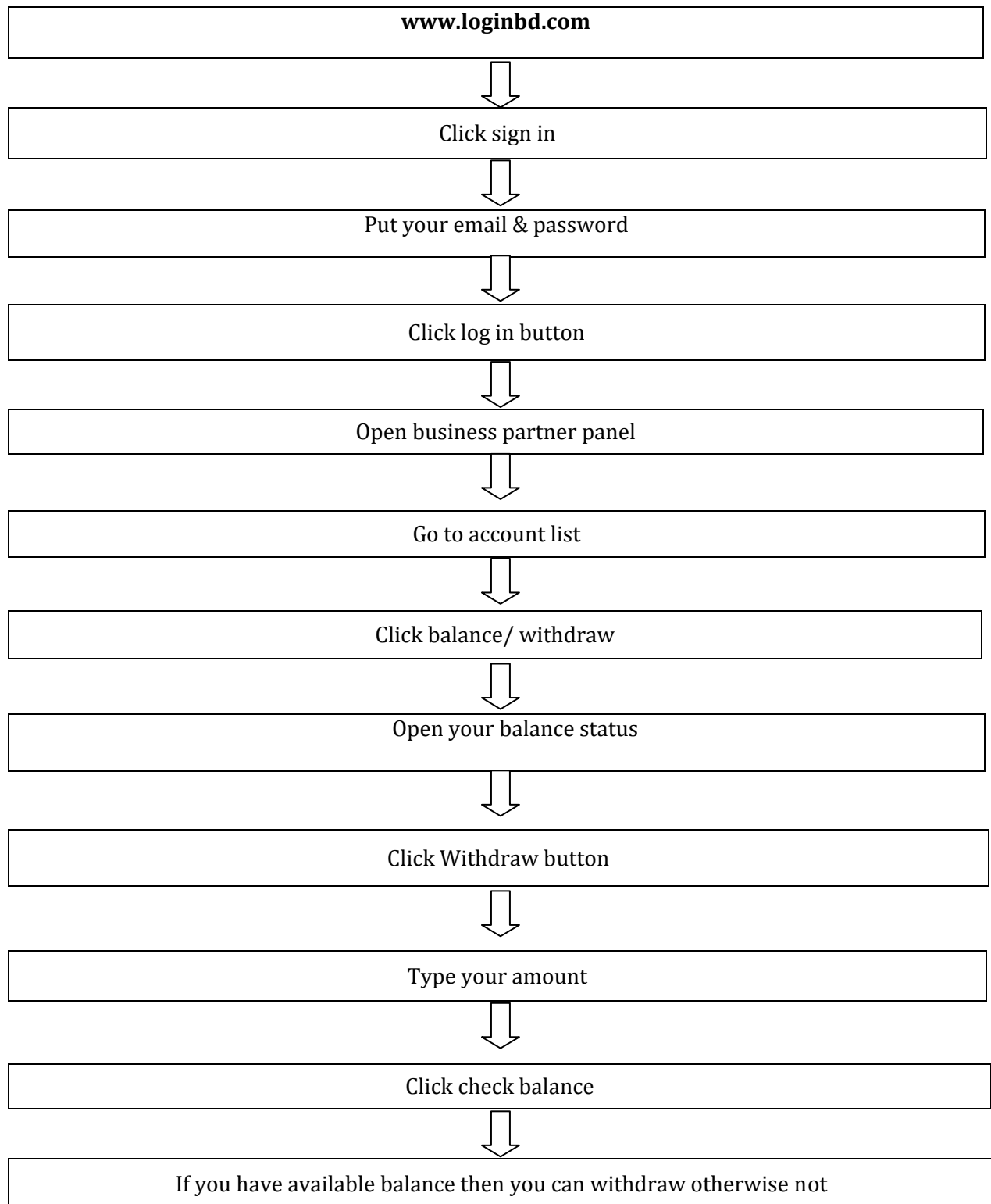
HOW TO DEPOSIT AMOUNT

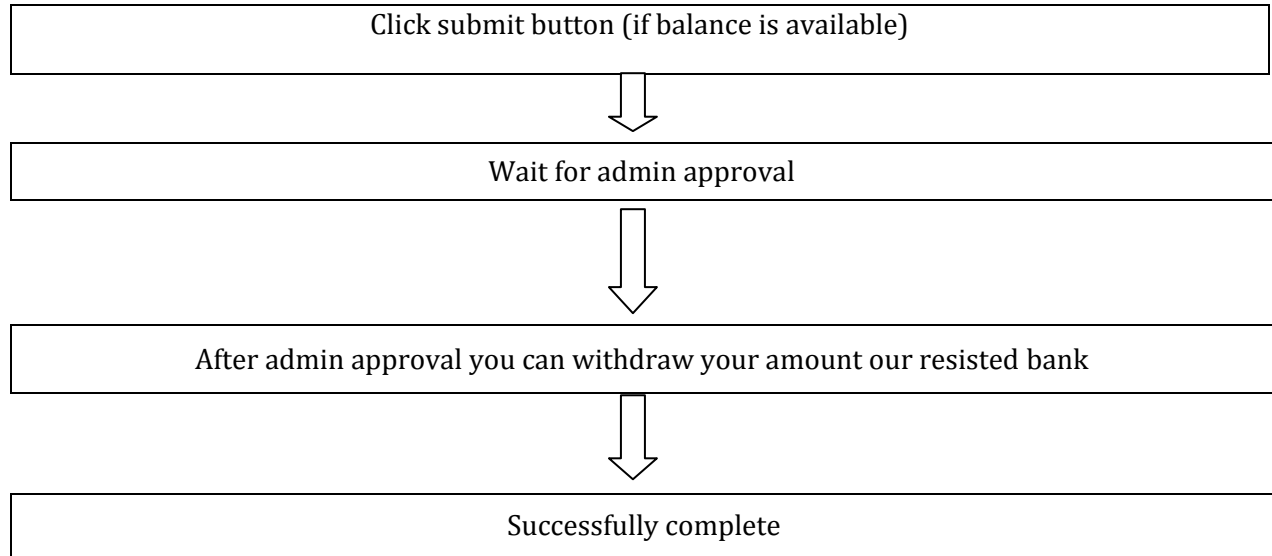
Note: If you are already our agent then you can access this option otherwise not.





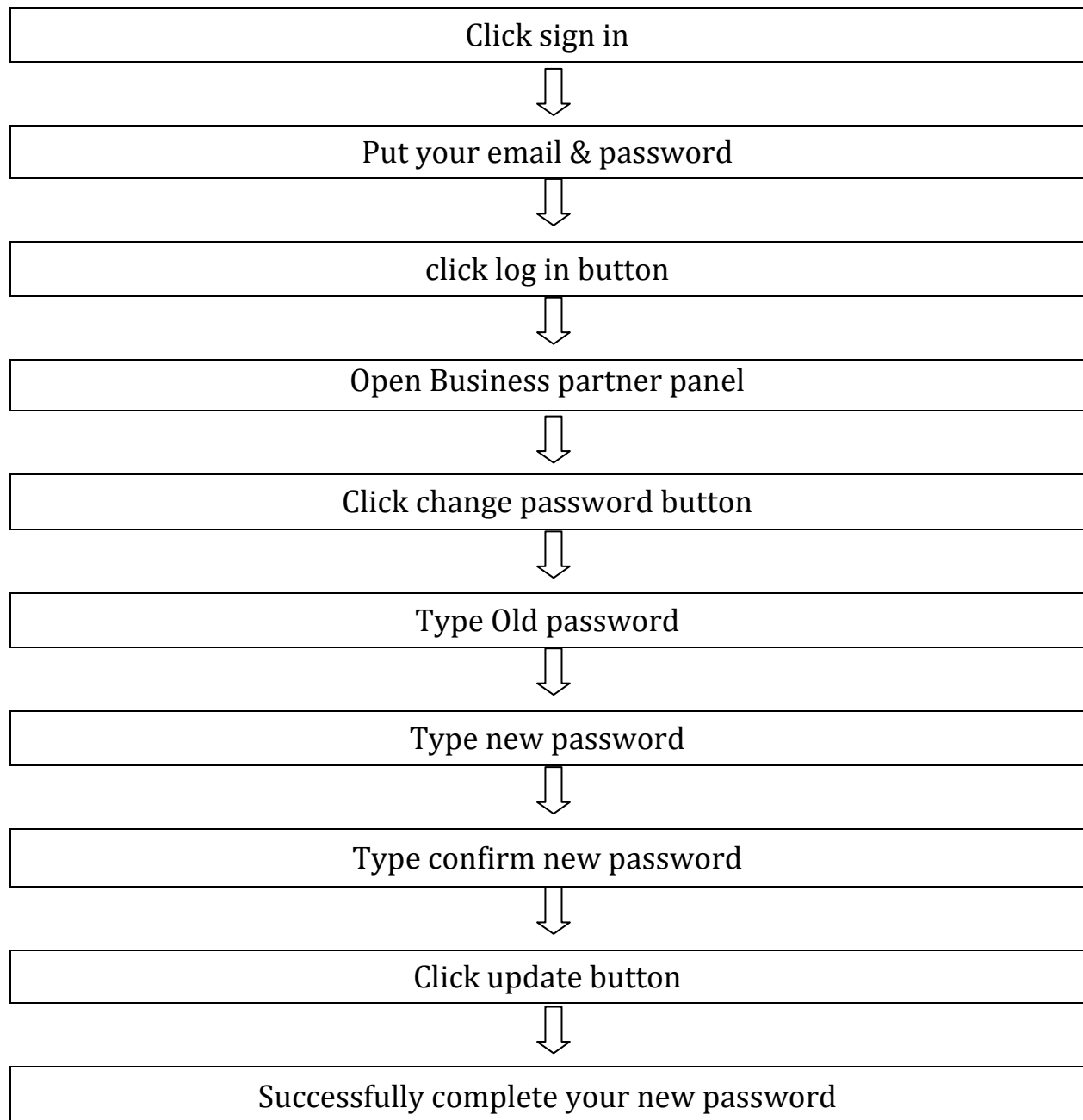
HOW TO CHECK & WITHDRAW BALANCE/AMOUNT





HOW TO CHANGE YOUR PASSWORD:

Note: Please complete your payment otherwise you can't access this portion



Thank you